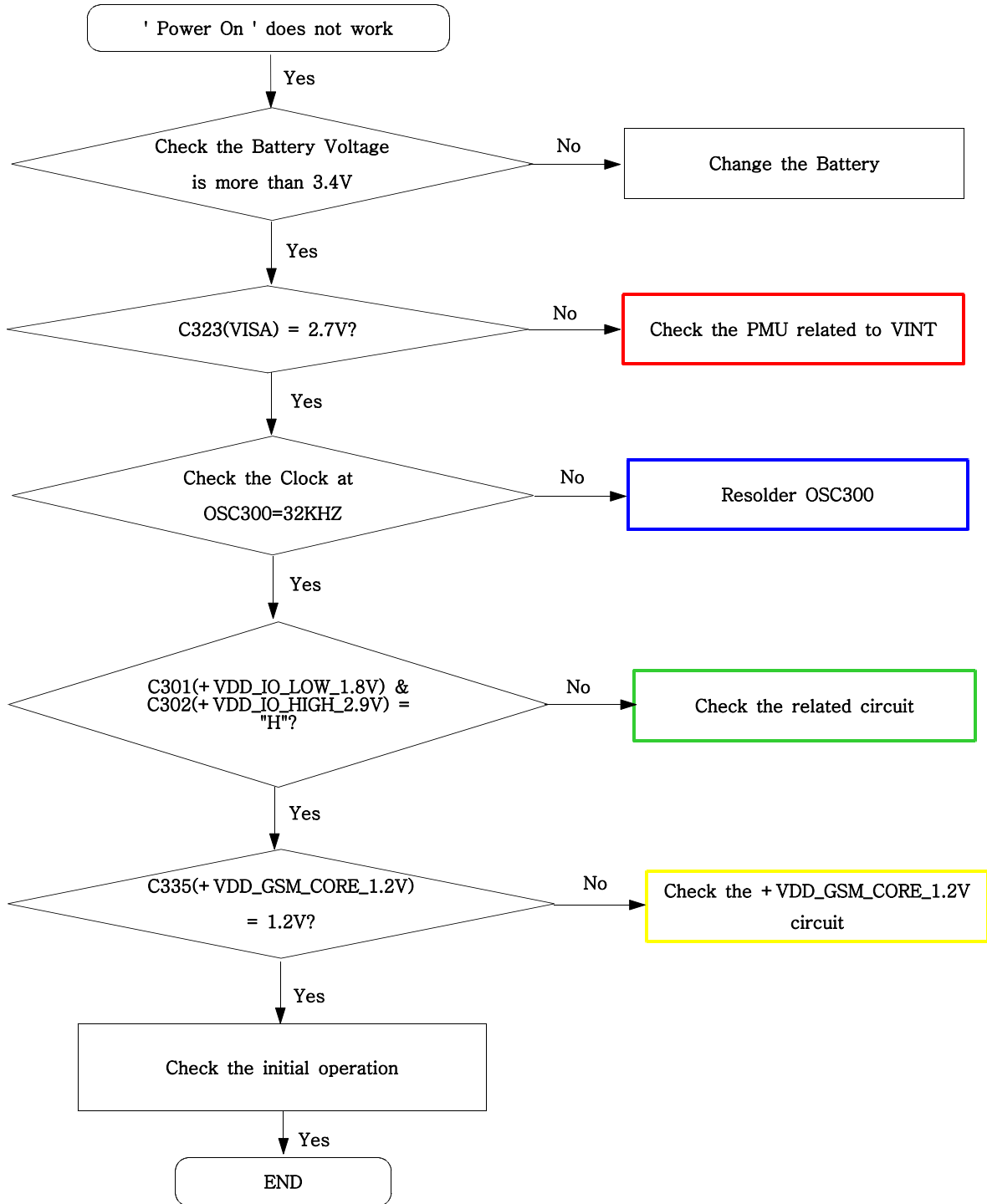
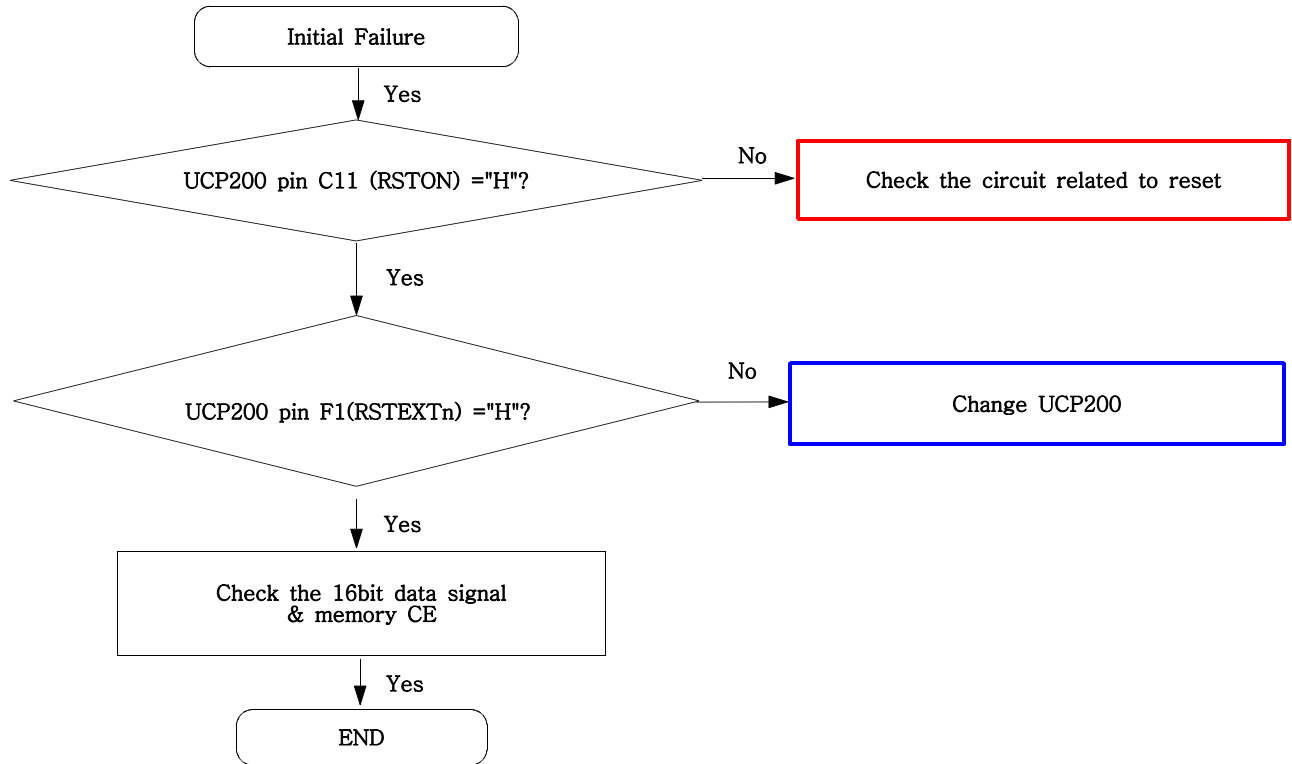


9. Flow Chart of Troubleshooting

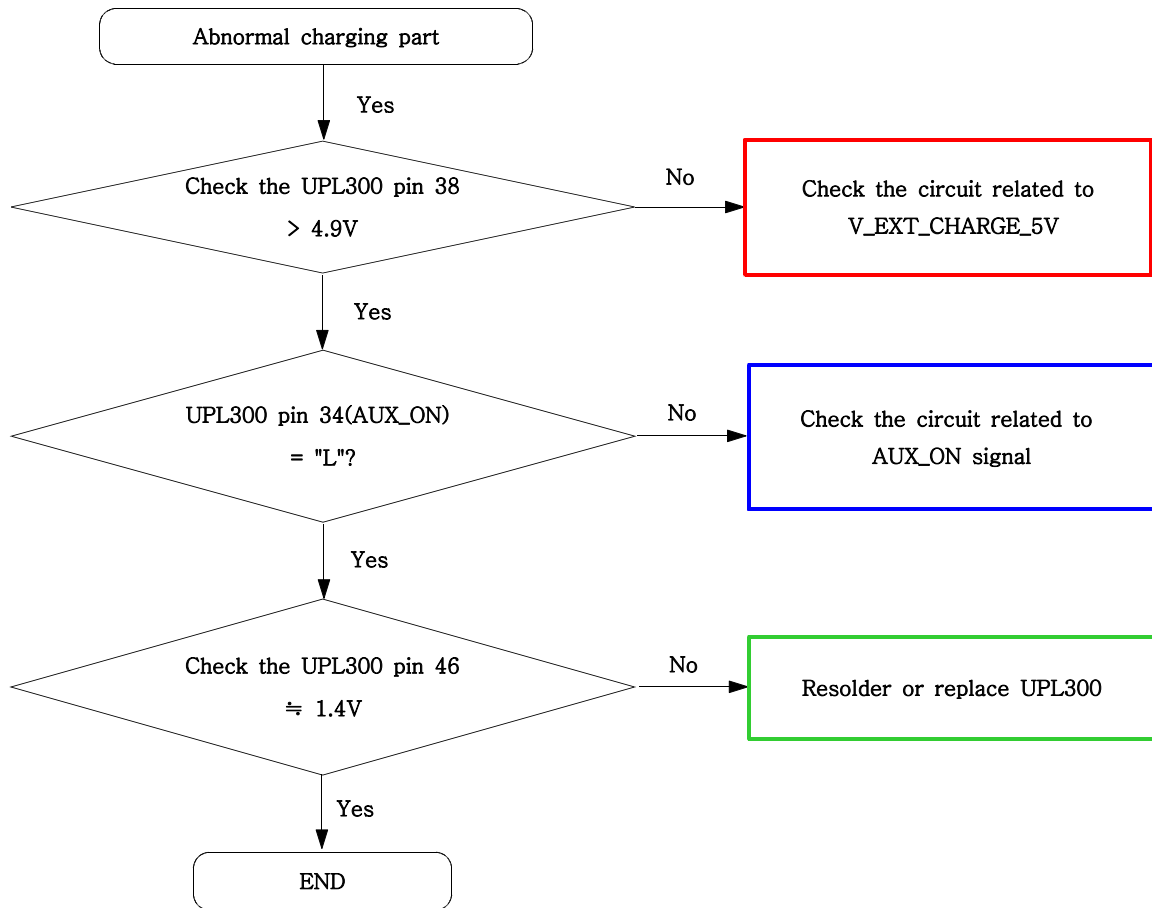
9-1. Power On



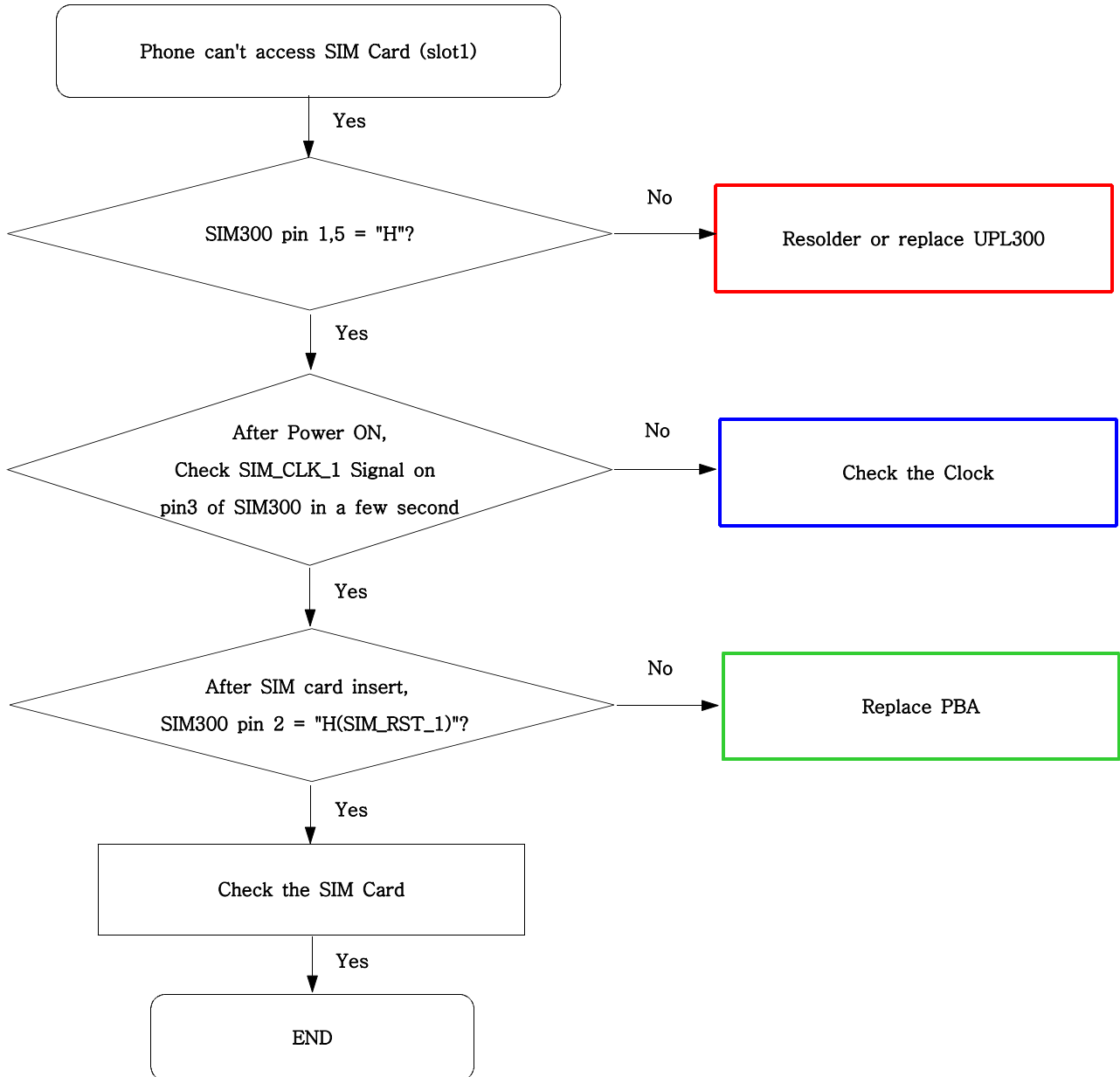
9-2. Initial

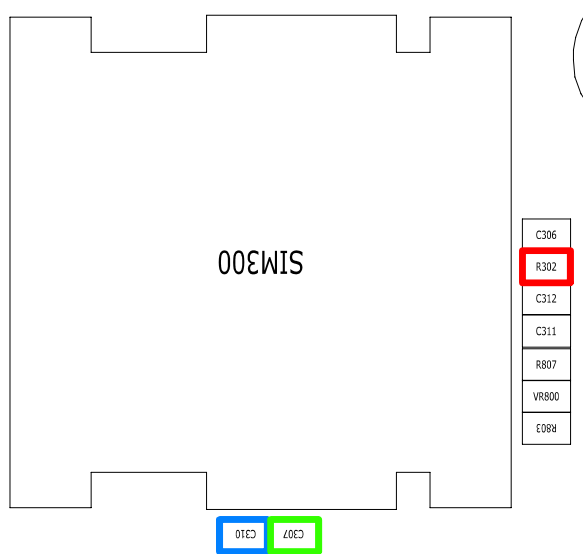
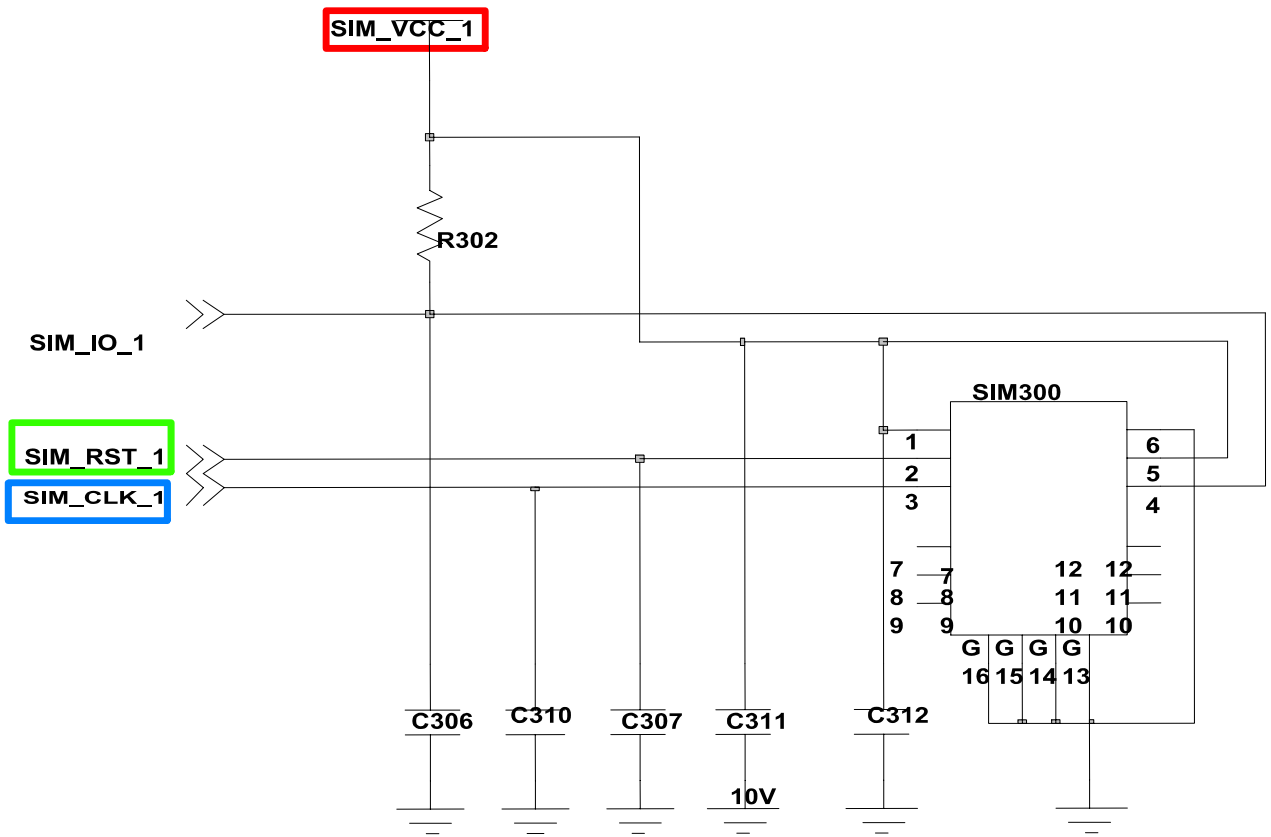


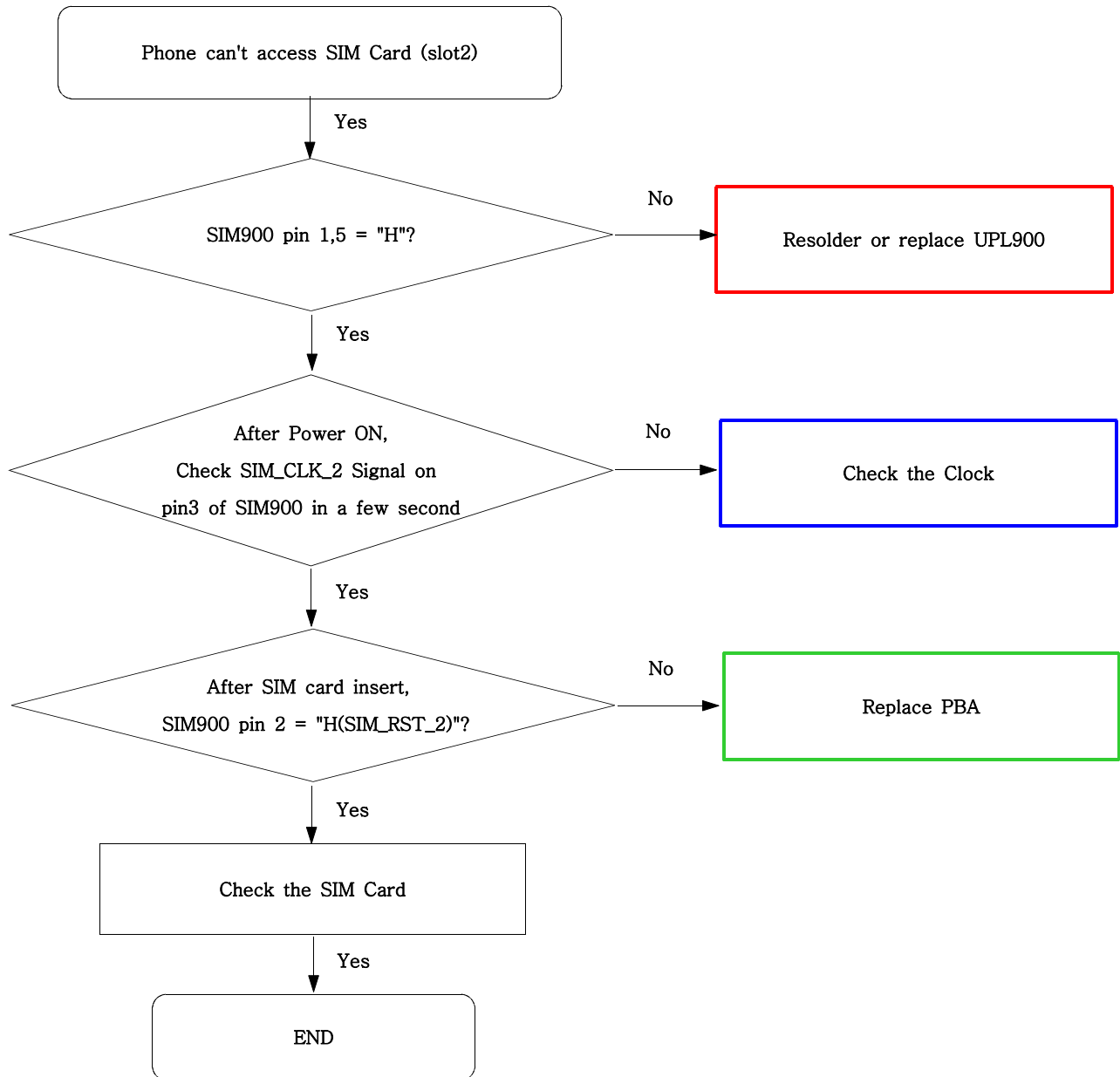
9-3. Charging Part

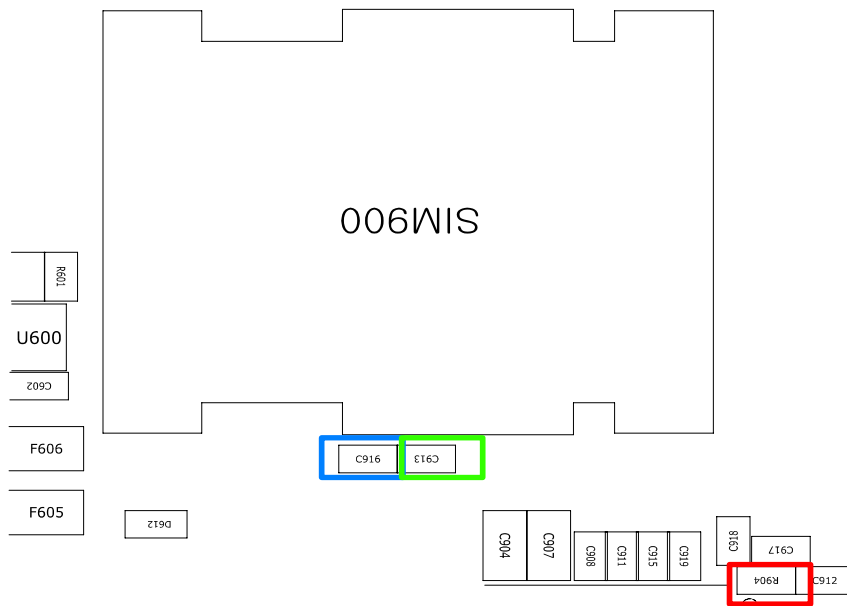
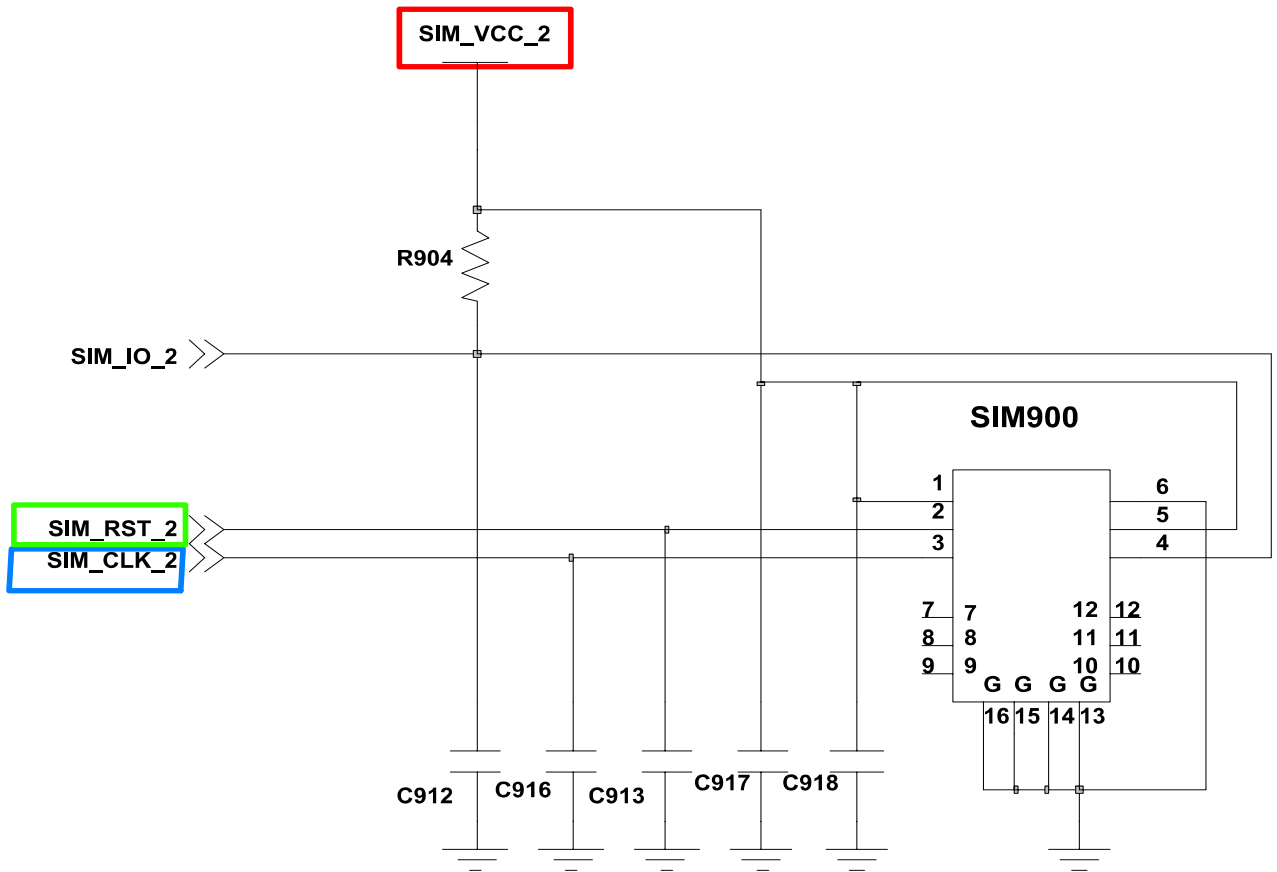


9-4. Sim Part
1)Master

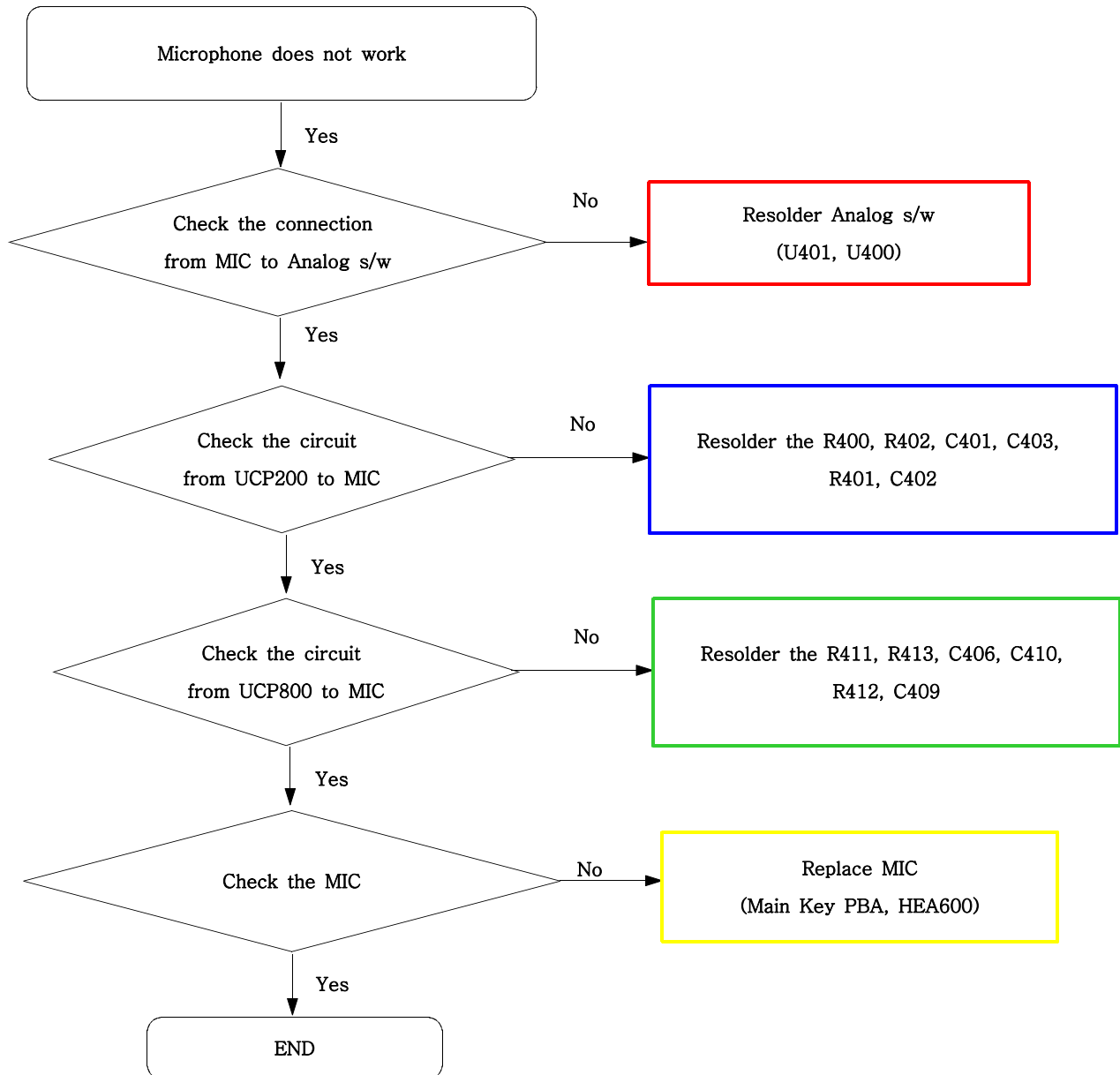


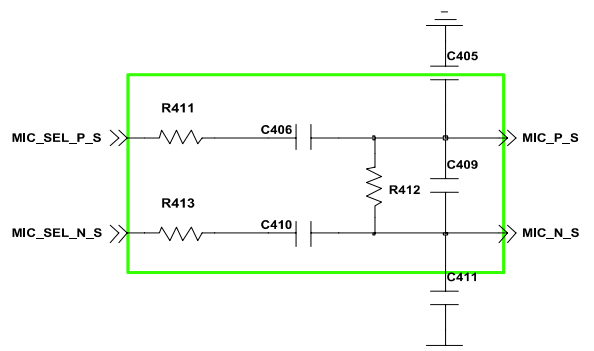
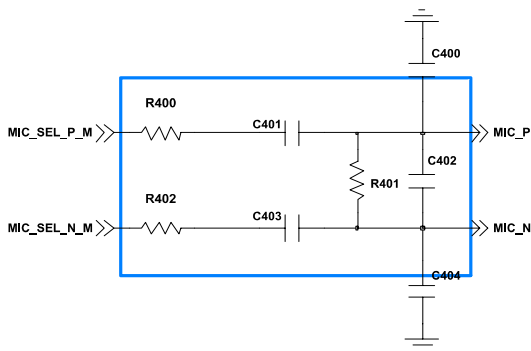
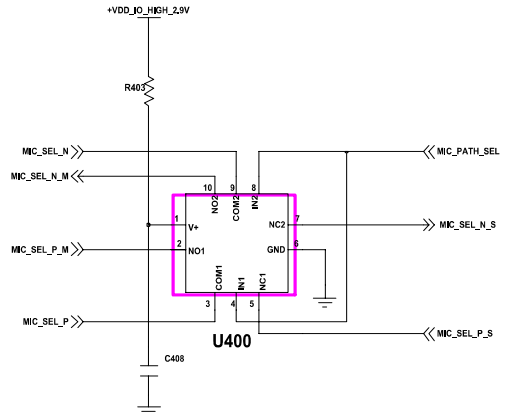
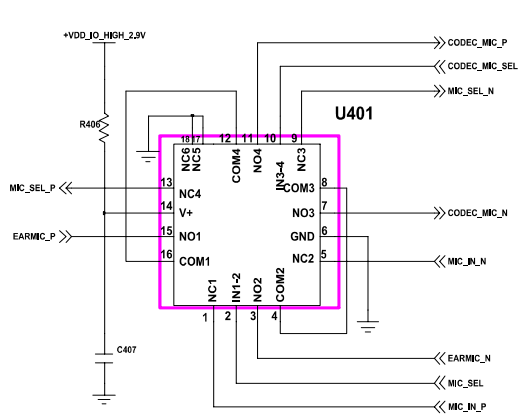


2)Slave

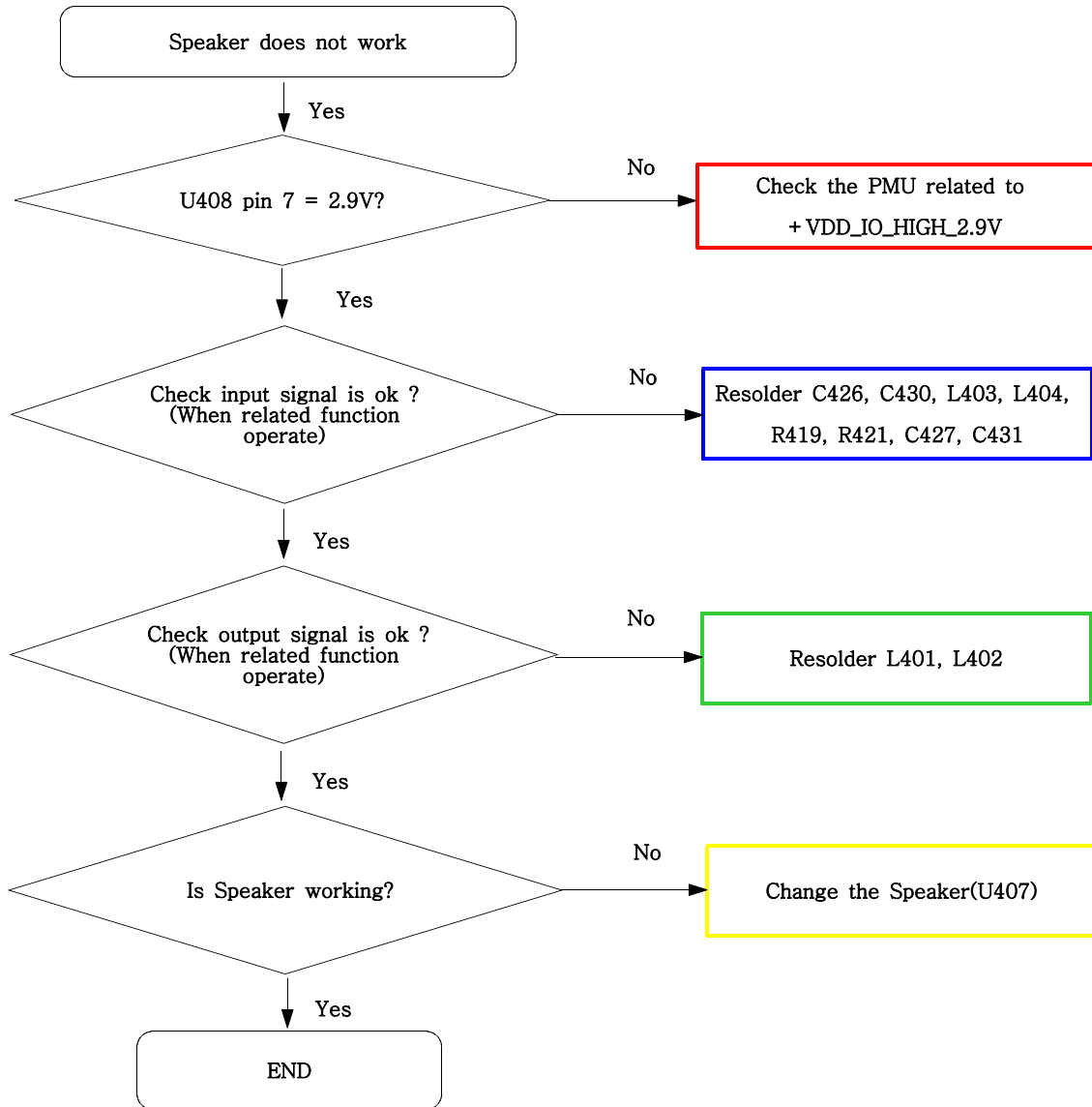


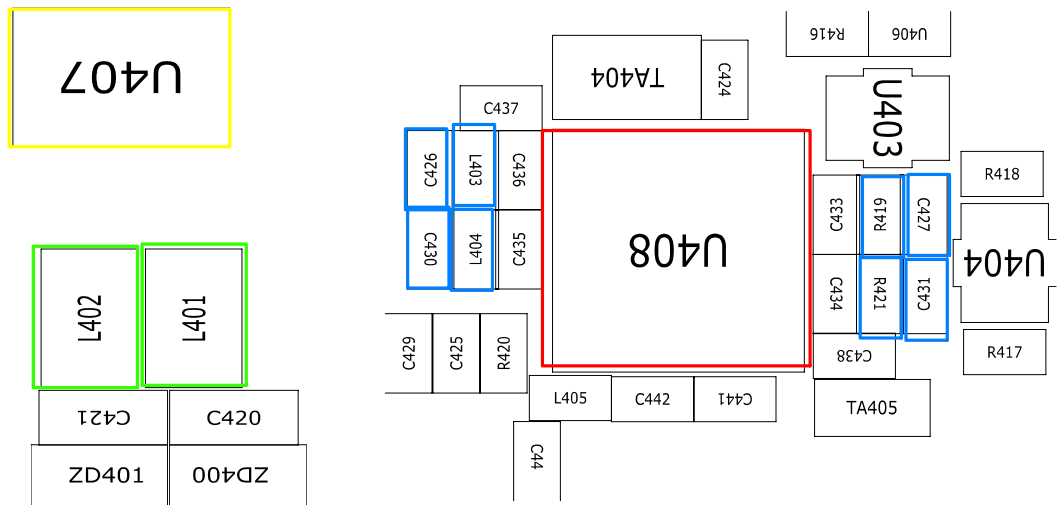
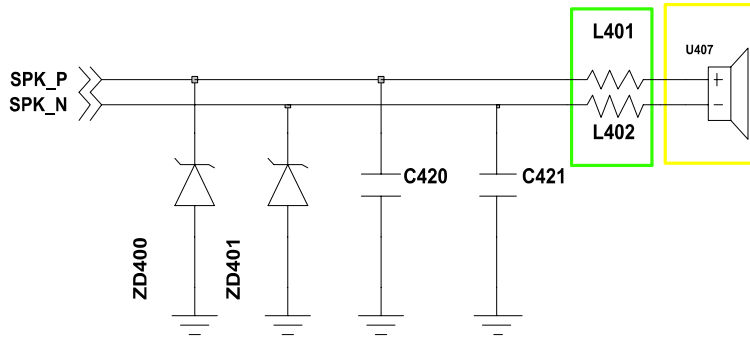
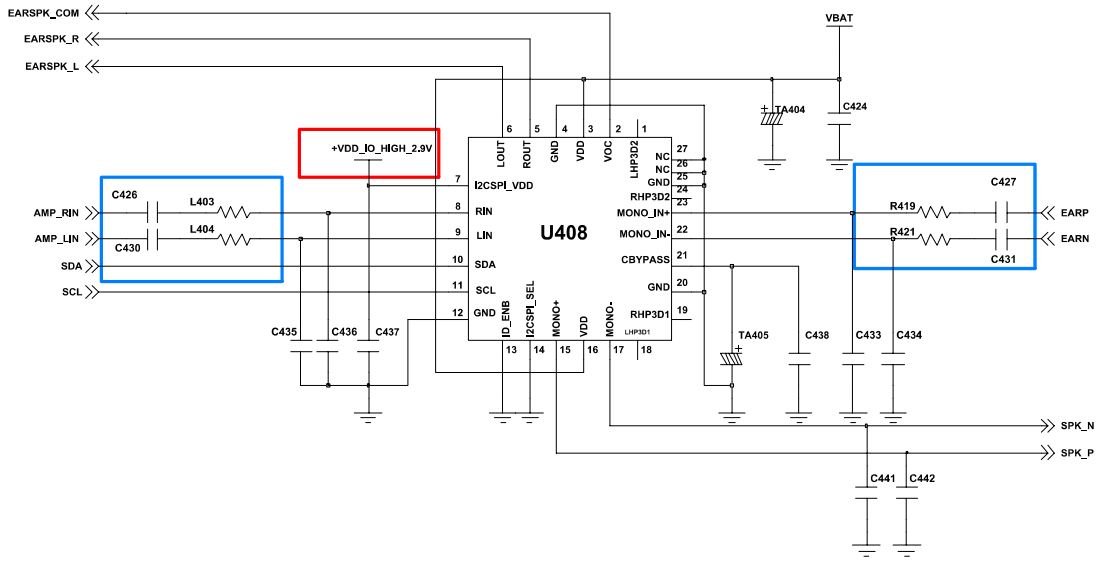
9-5. Microphone Part



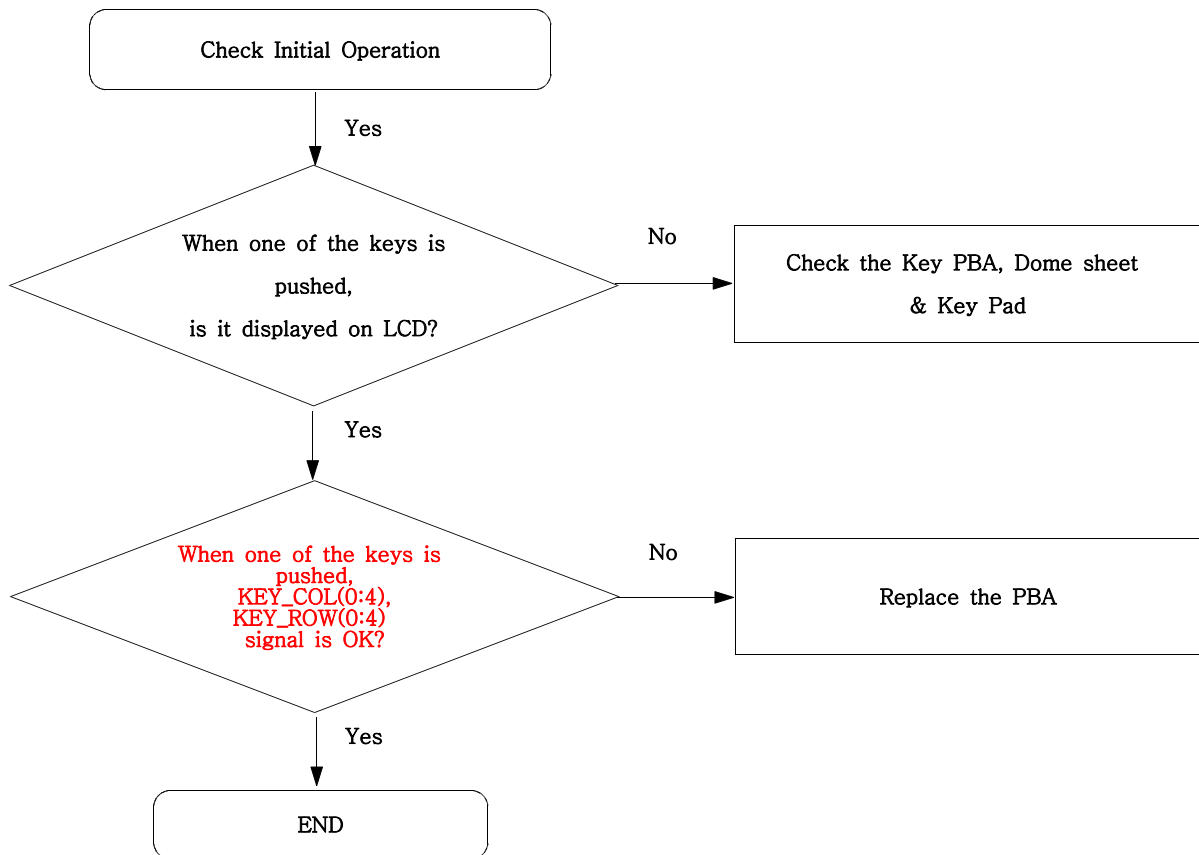


9-6. Speaker Part(Melody)

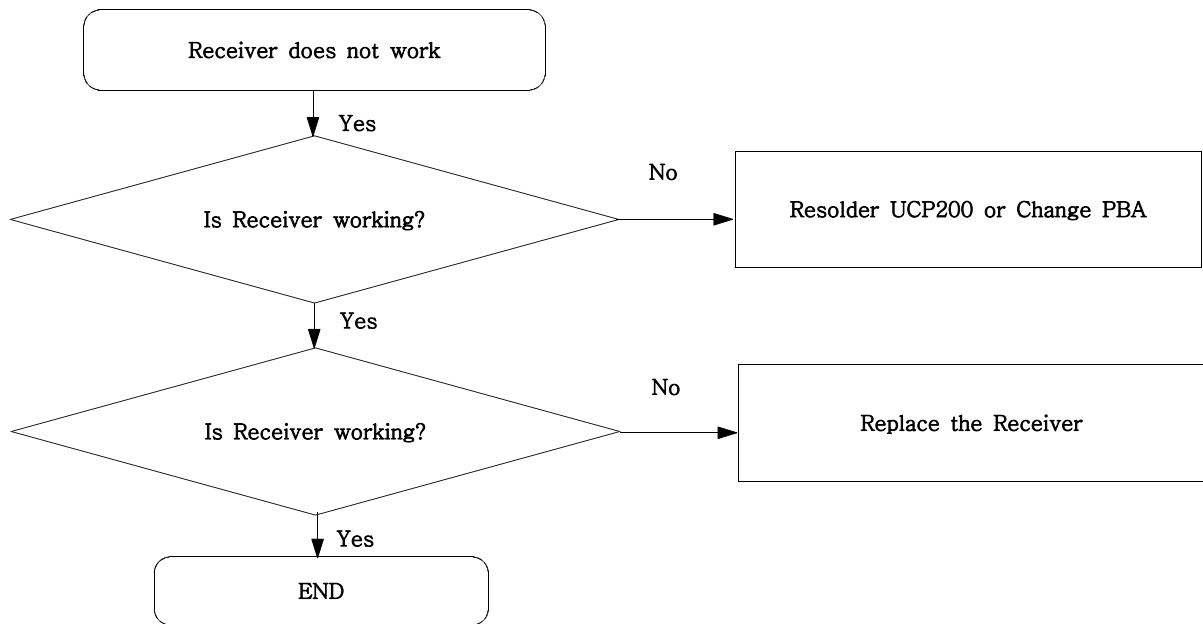




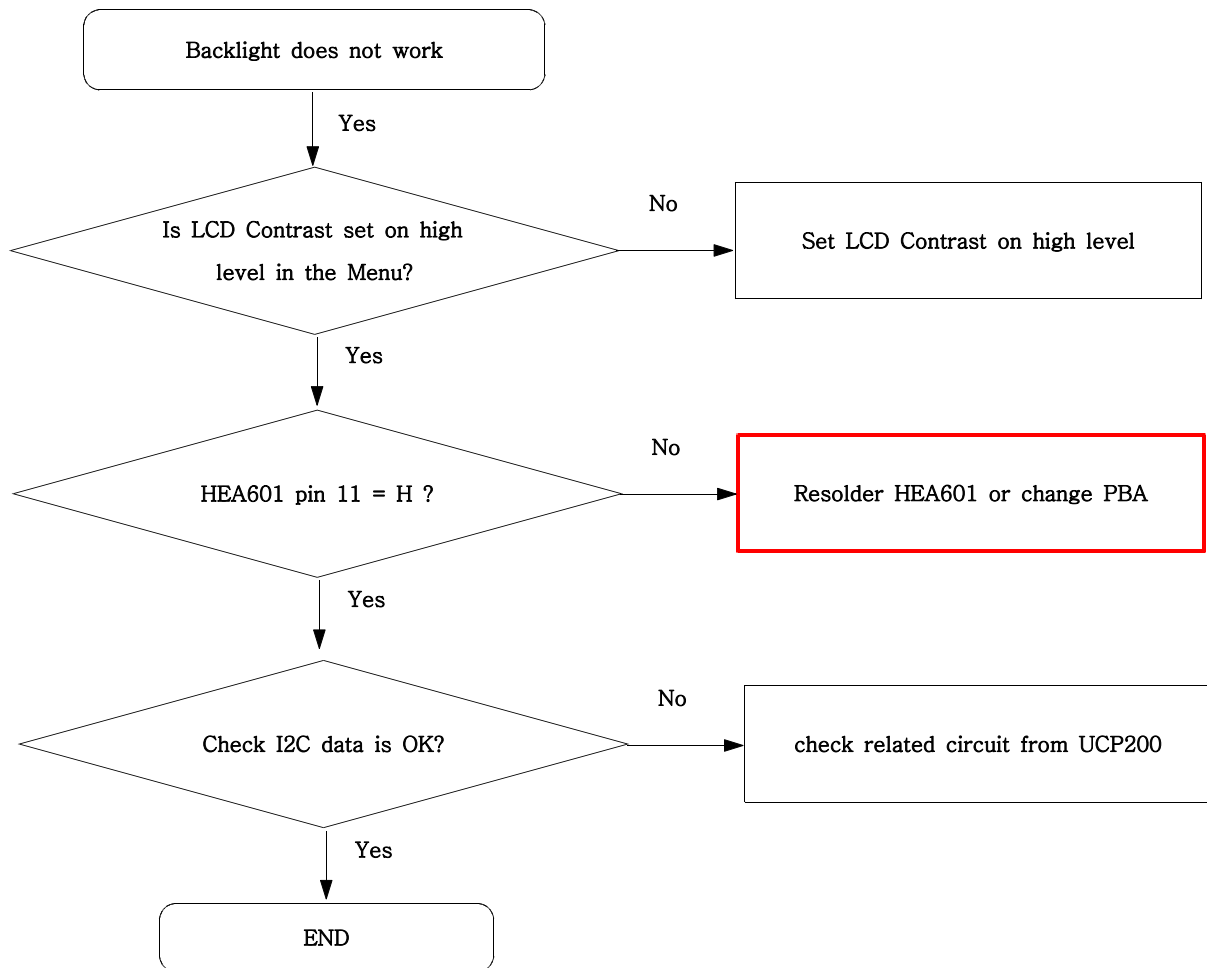
9-7. Key Data Input

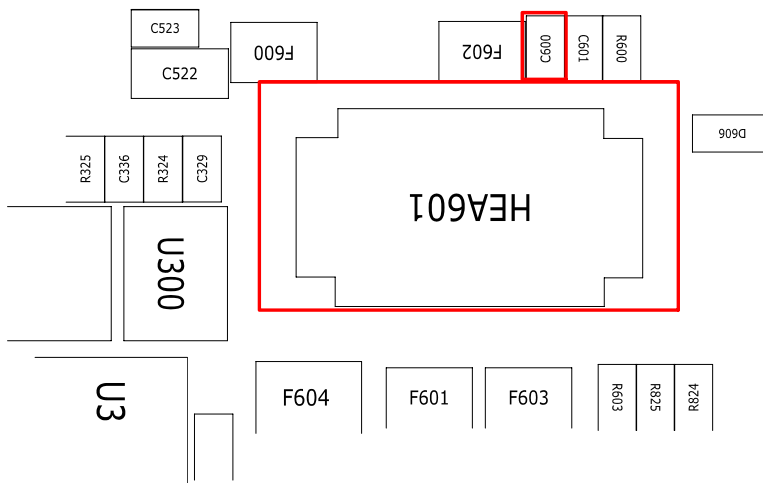
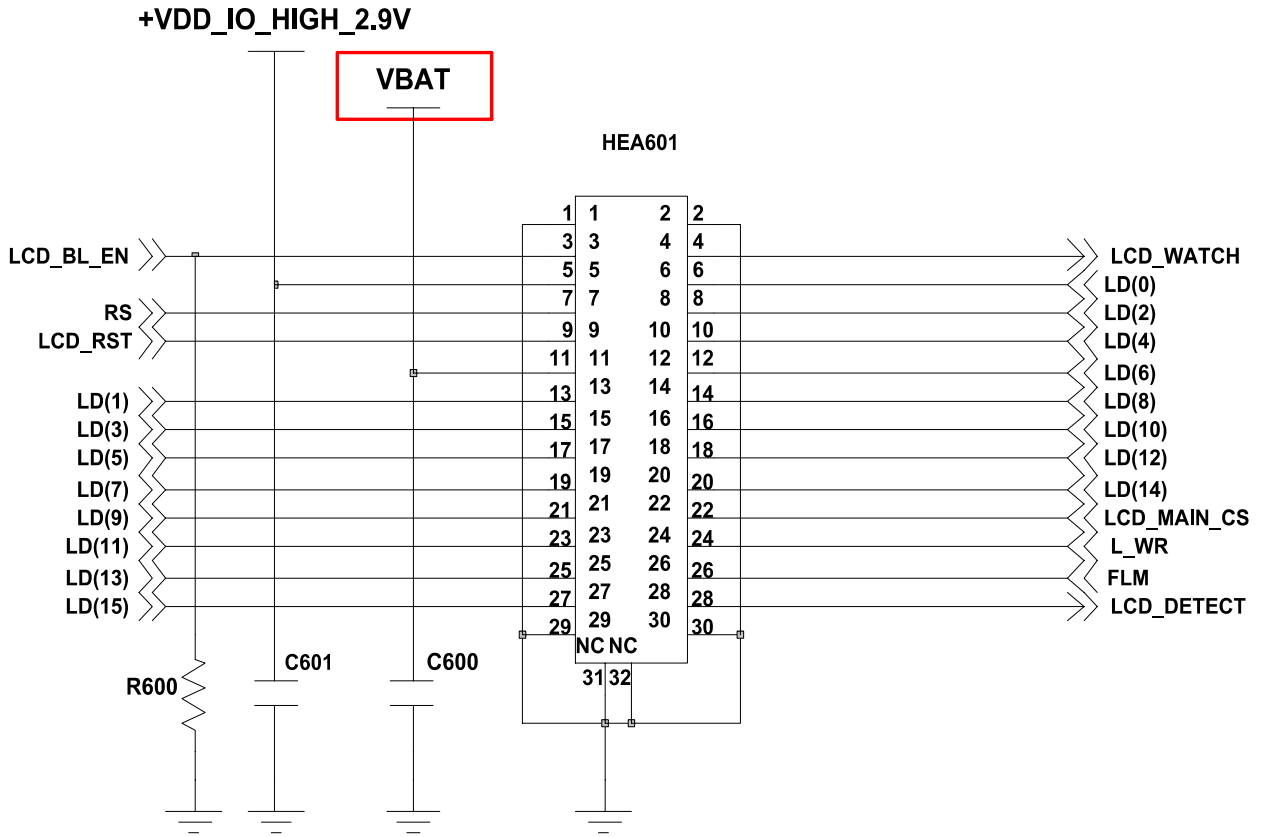


9-8. Receiver Part

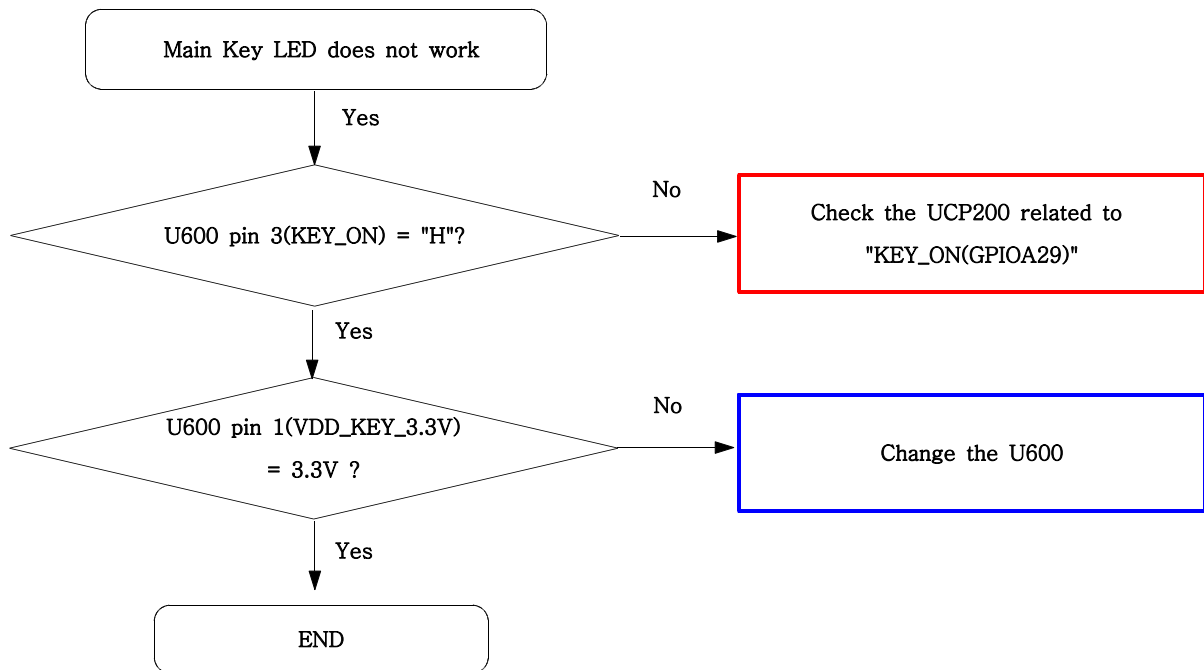


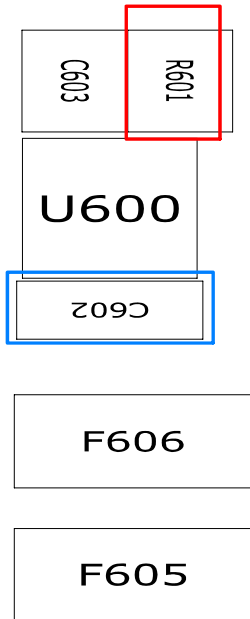
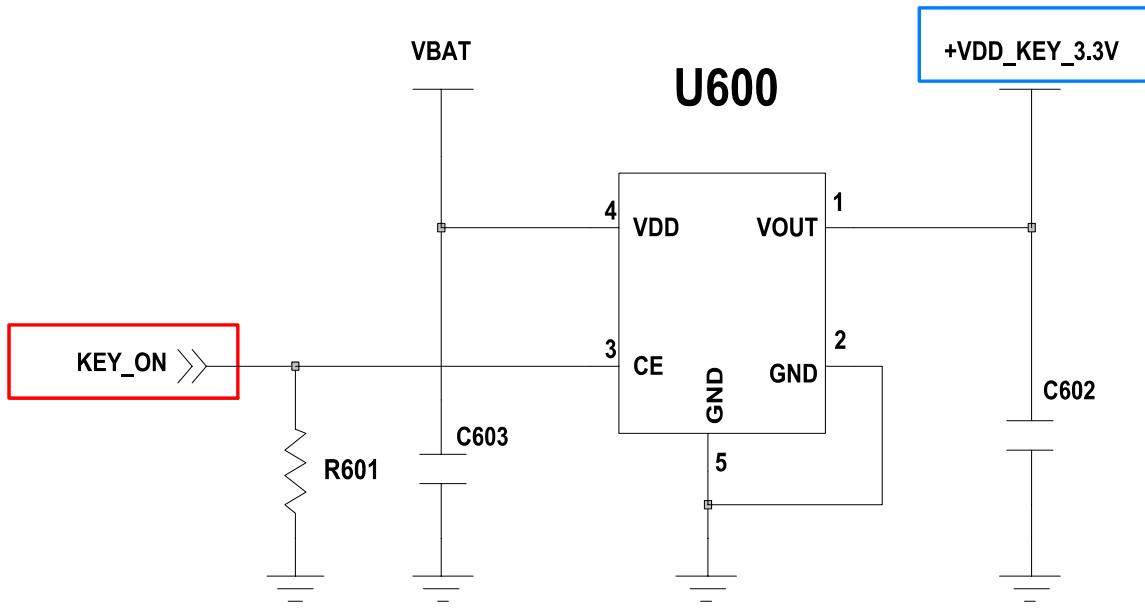
9-9. Back Light (for Color Main LCD)



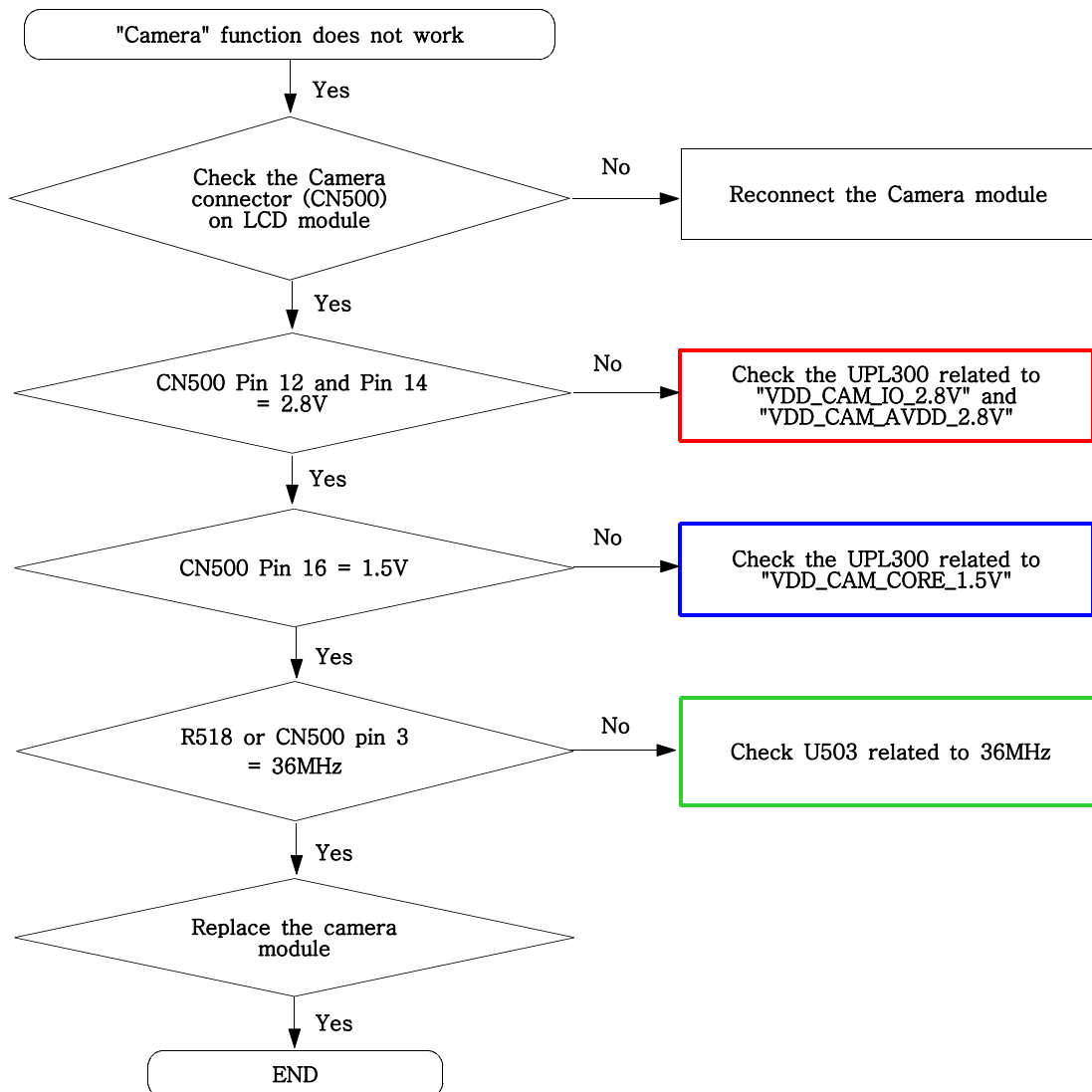


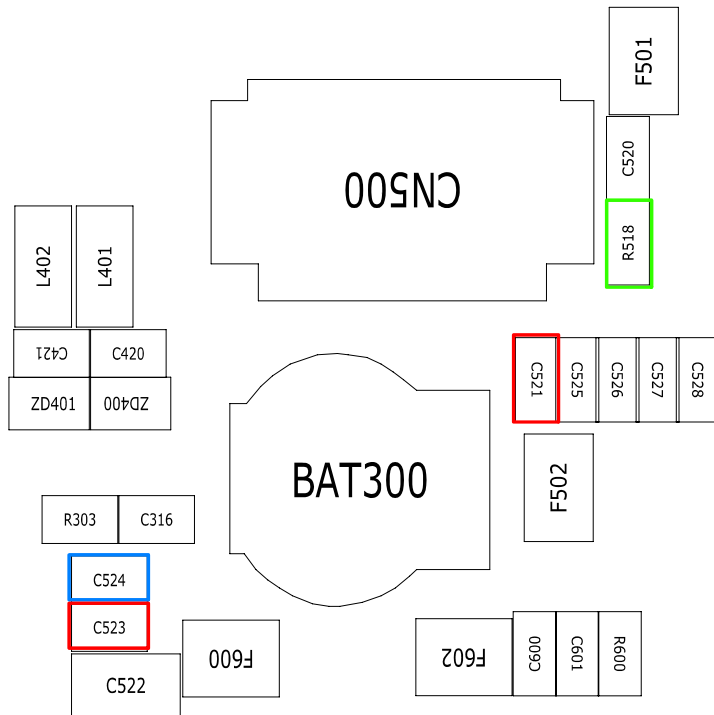
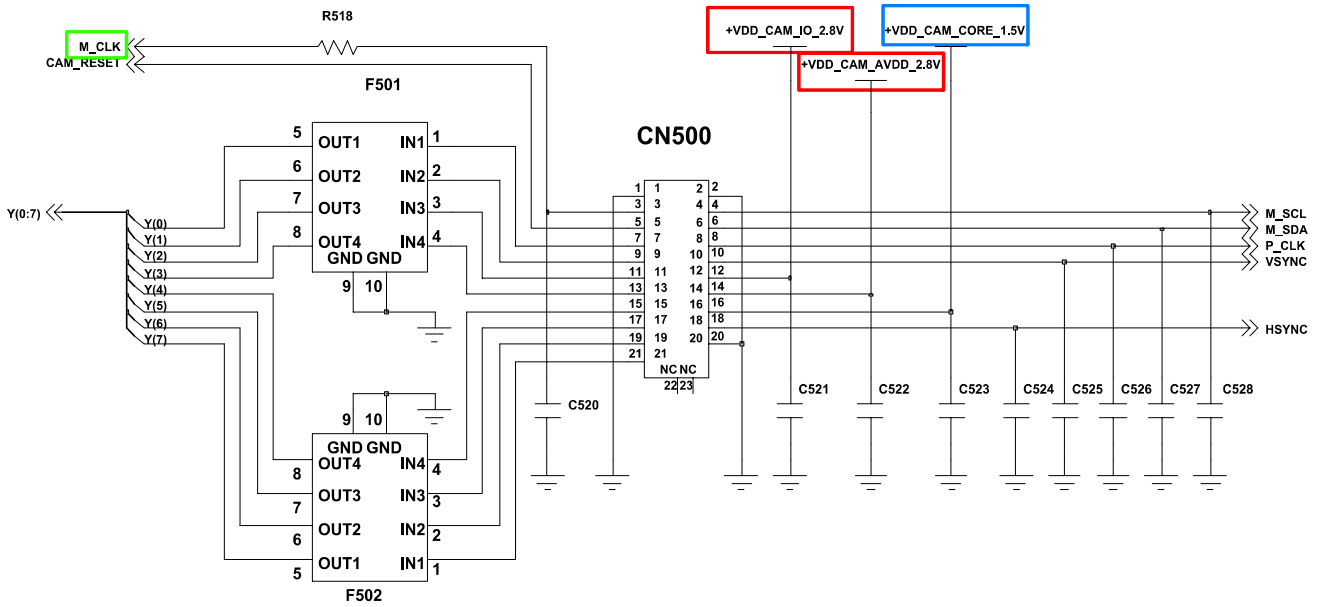
9-10. Key Back Light





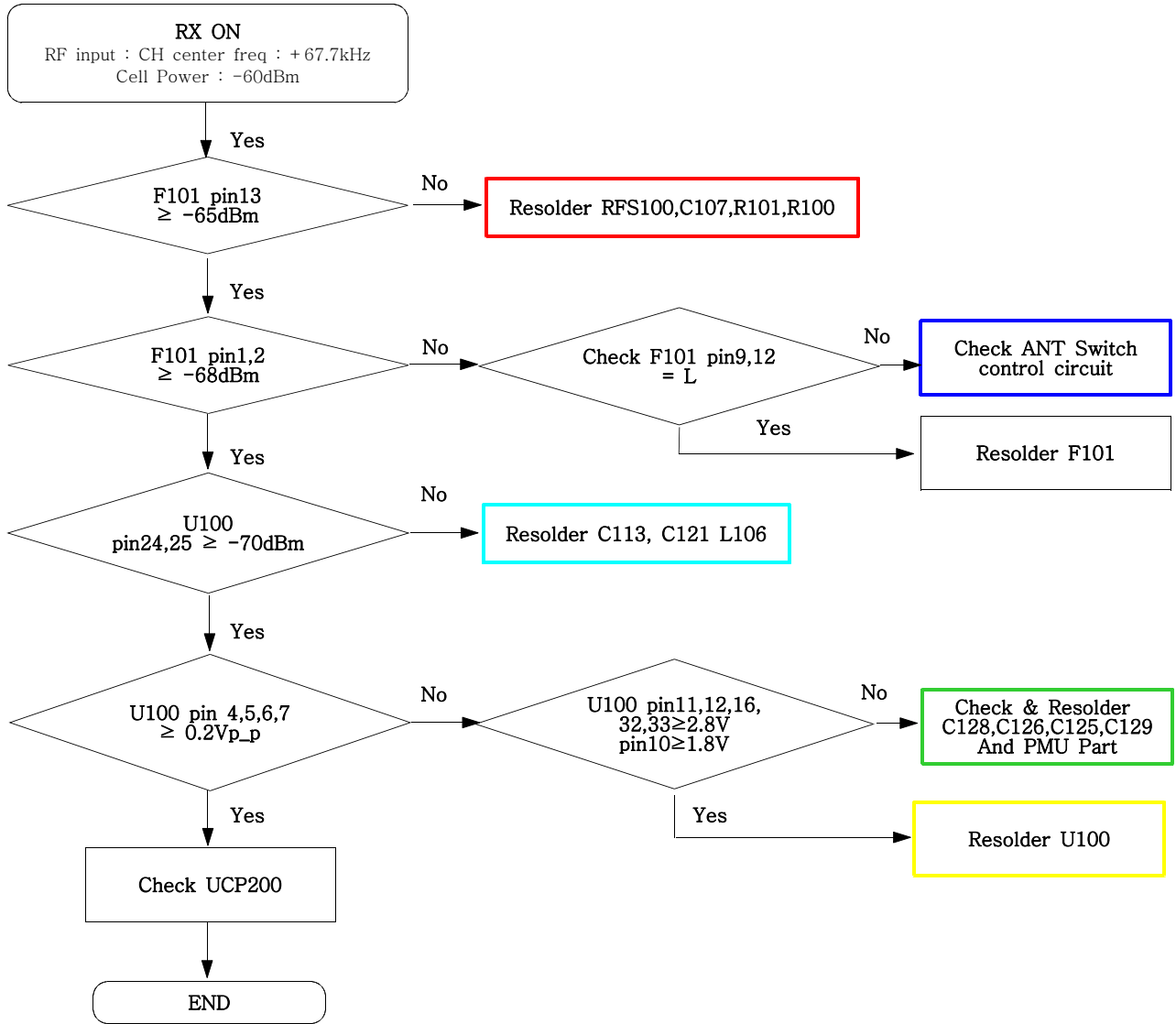
9-11. Camera part



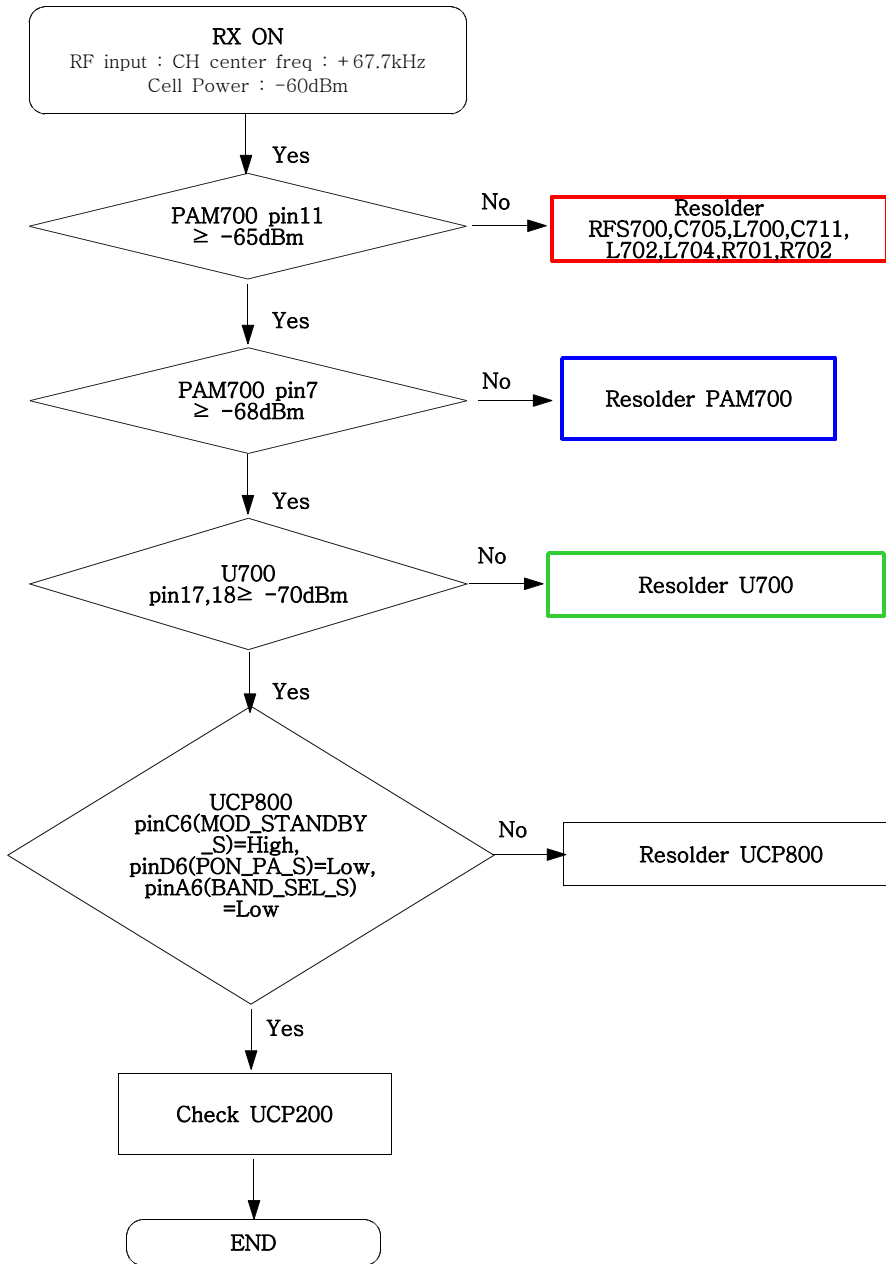


9-12. GSM Receiver

1) Master

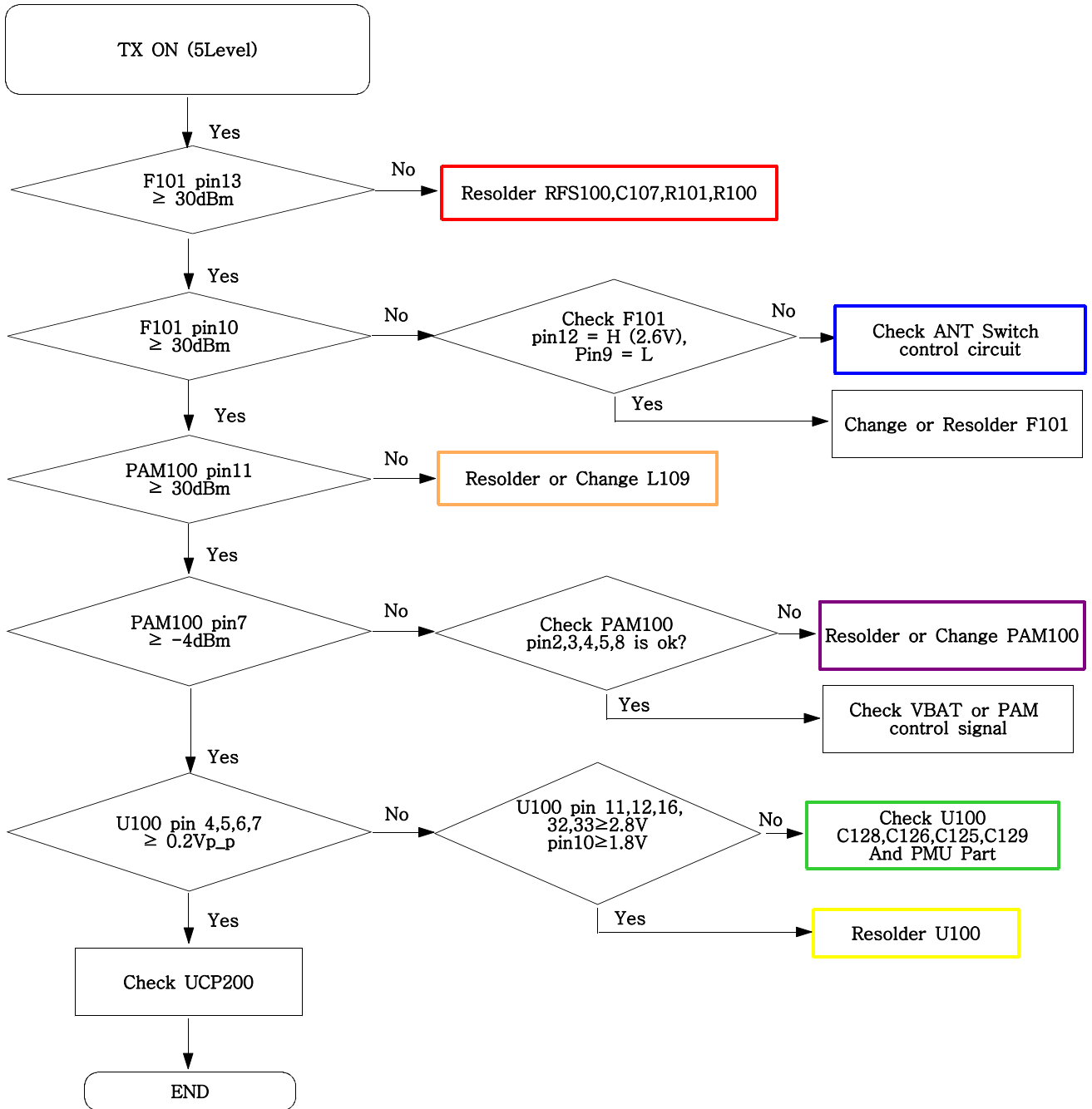


2)Slave

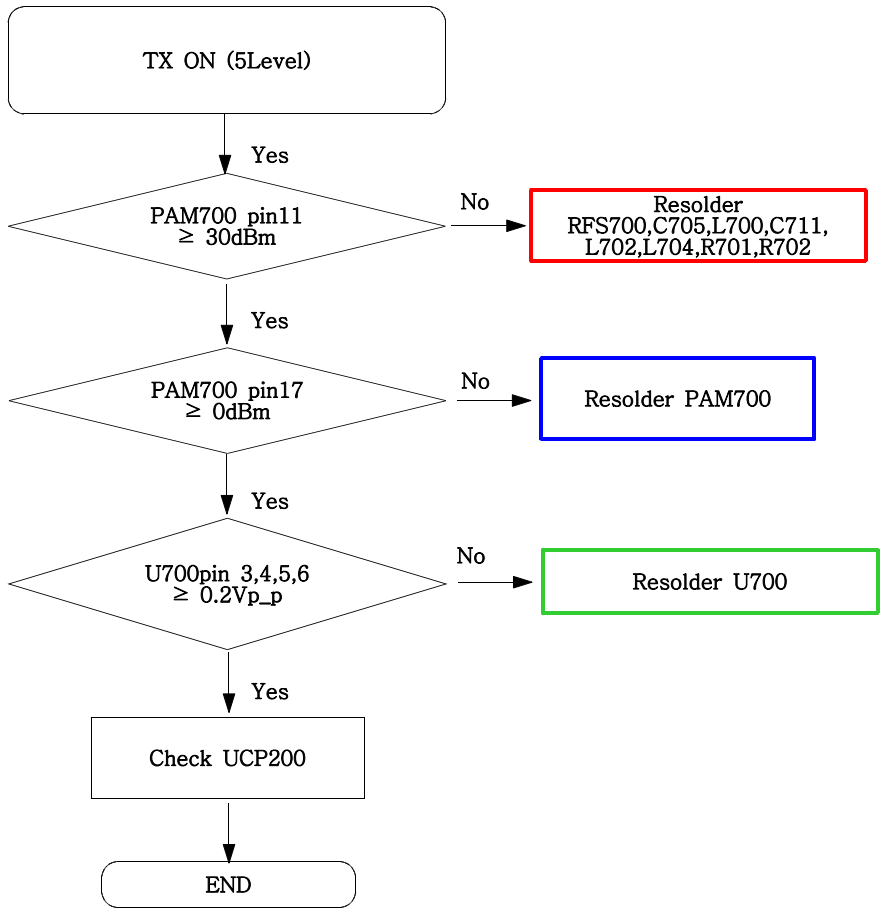


9-13. GSM Transmitter

1)Master

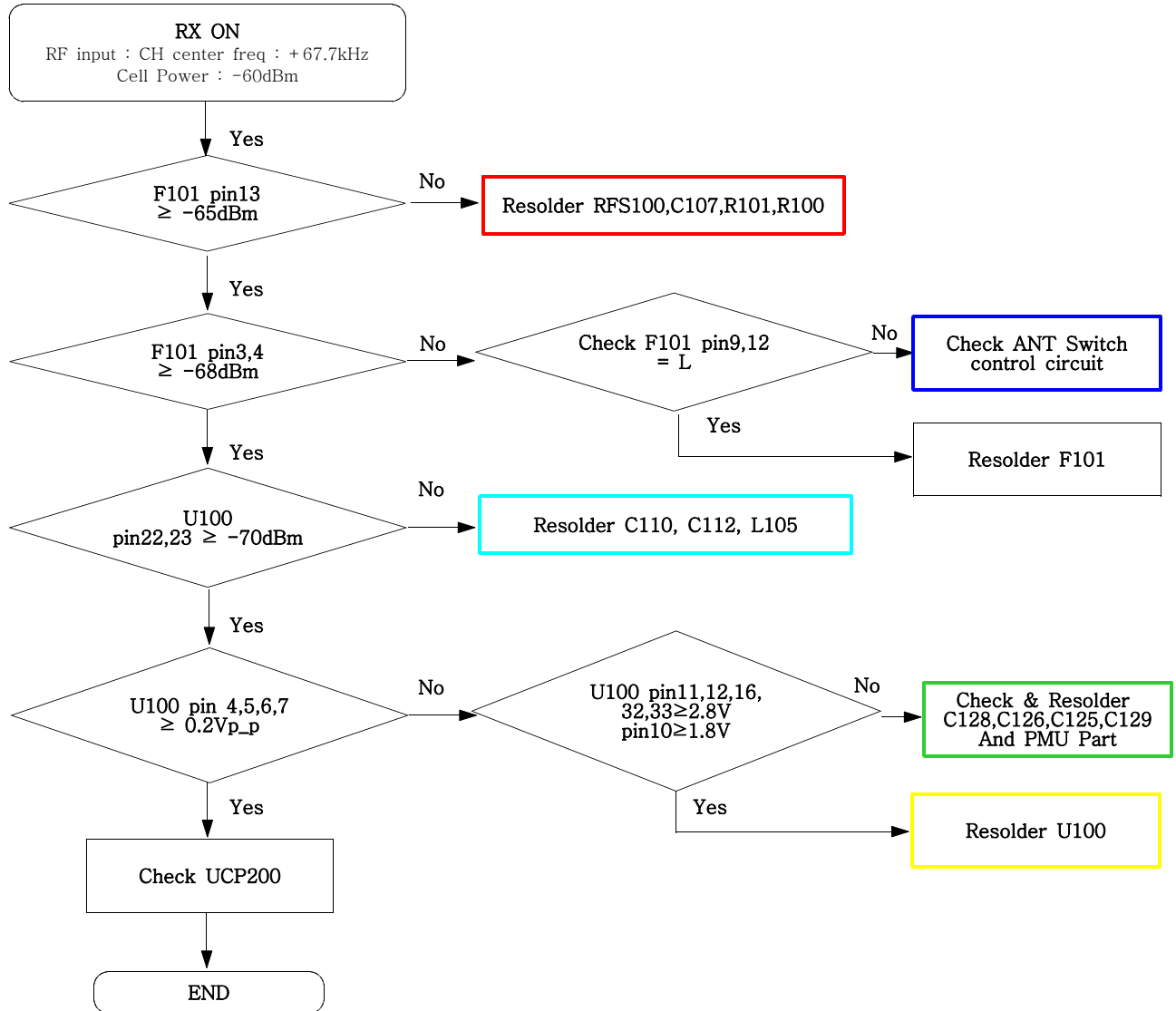


2)Slave

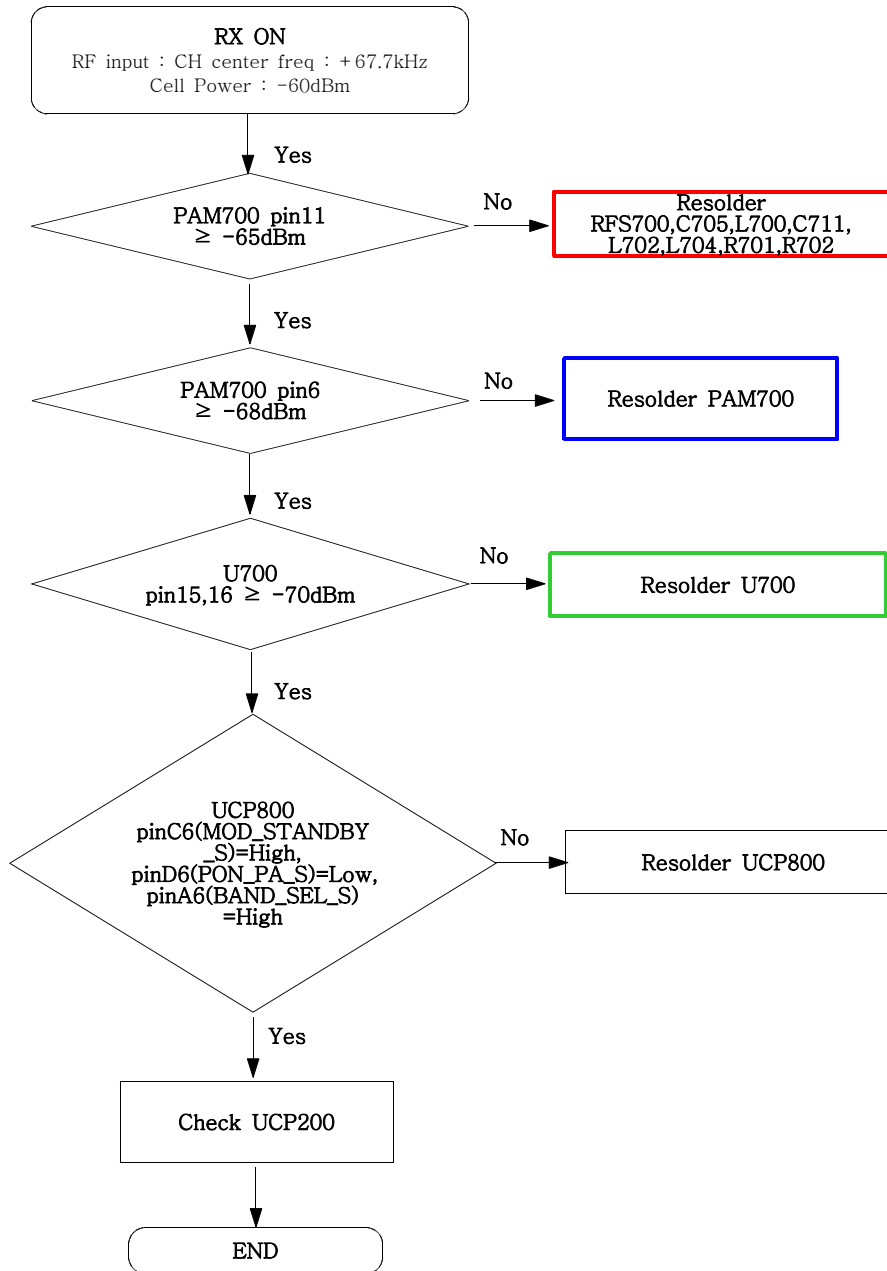


9-14. DCS Receiver

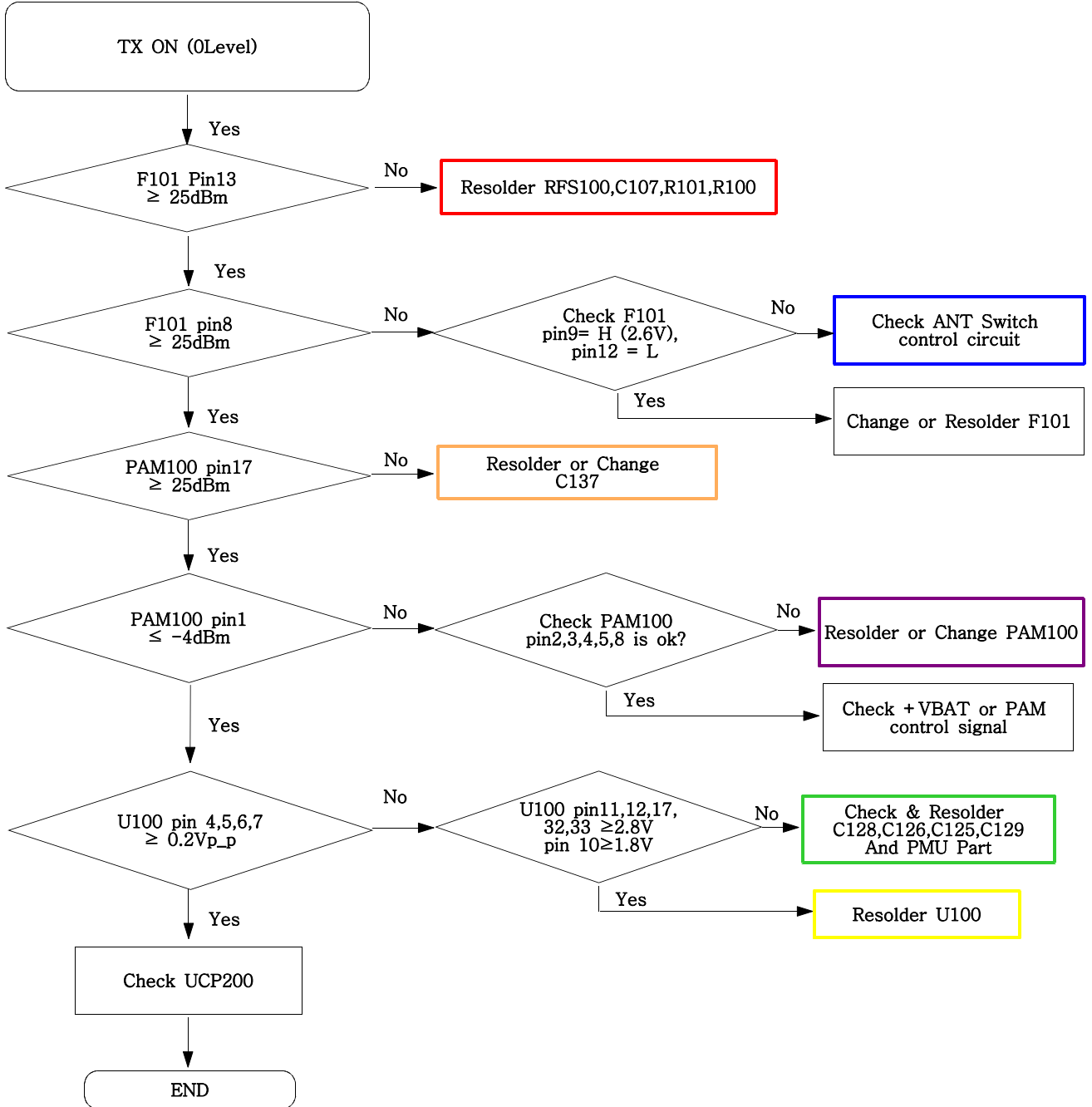
1) Master



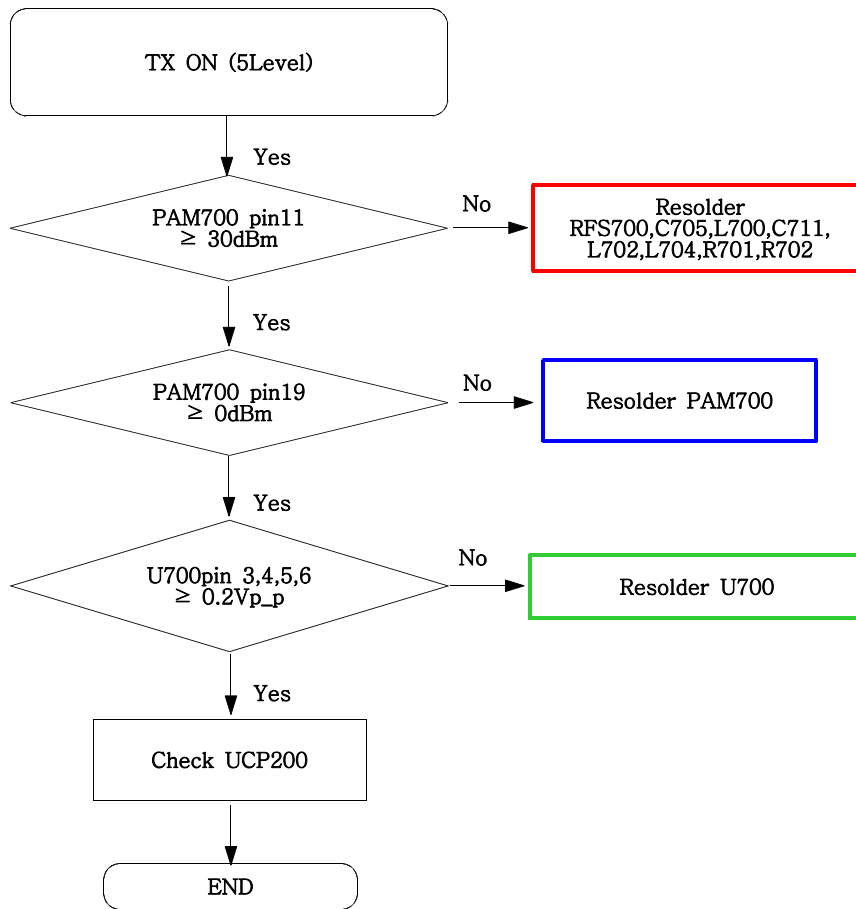
2)Slave



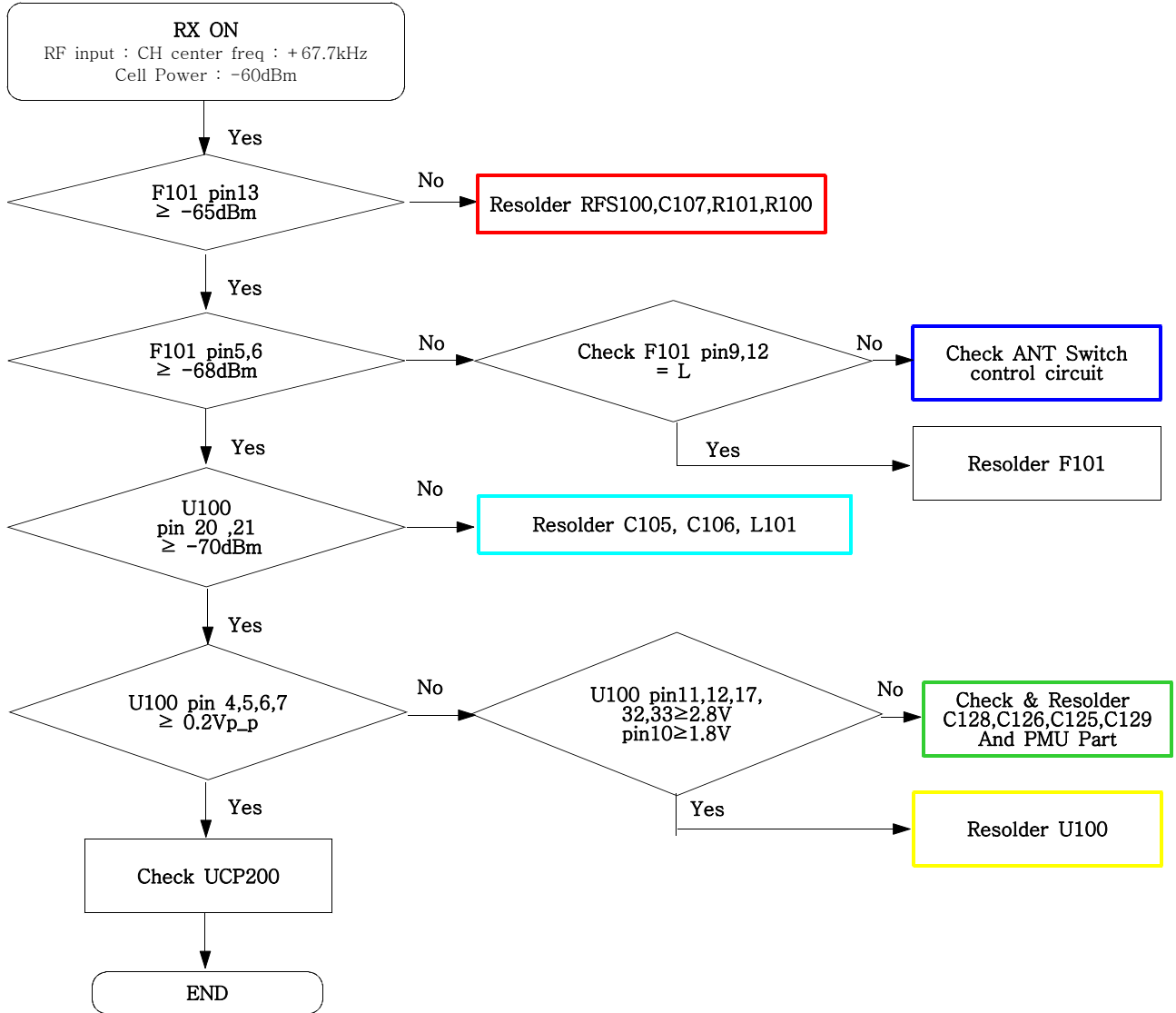
9-15. DCS Transmitter
1) Master



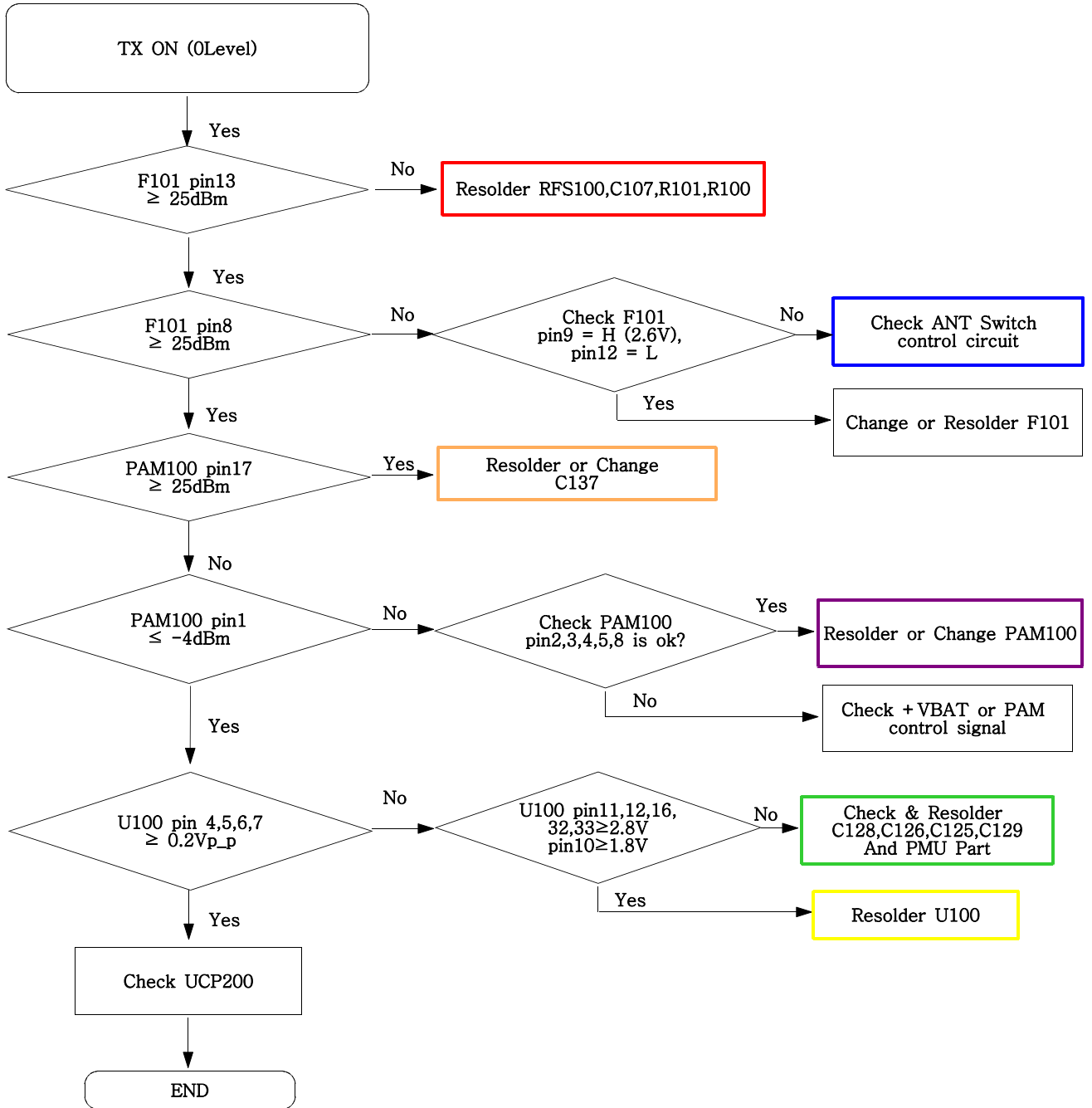
2)Slave



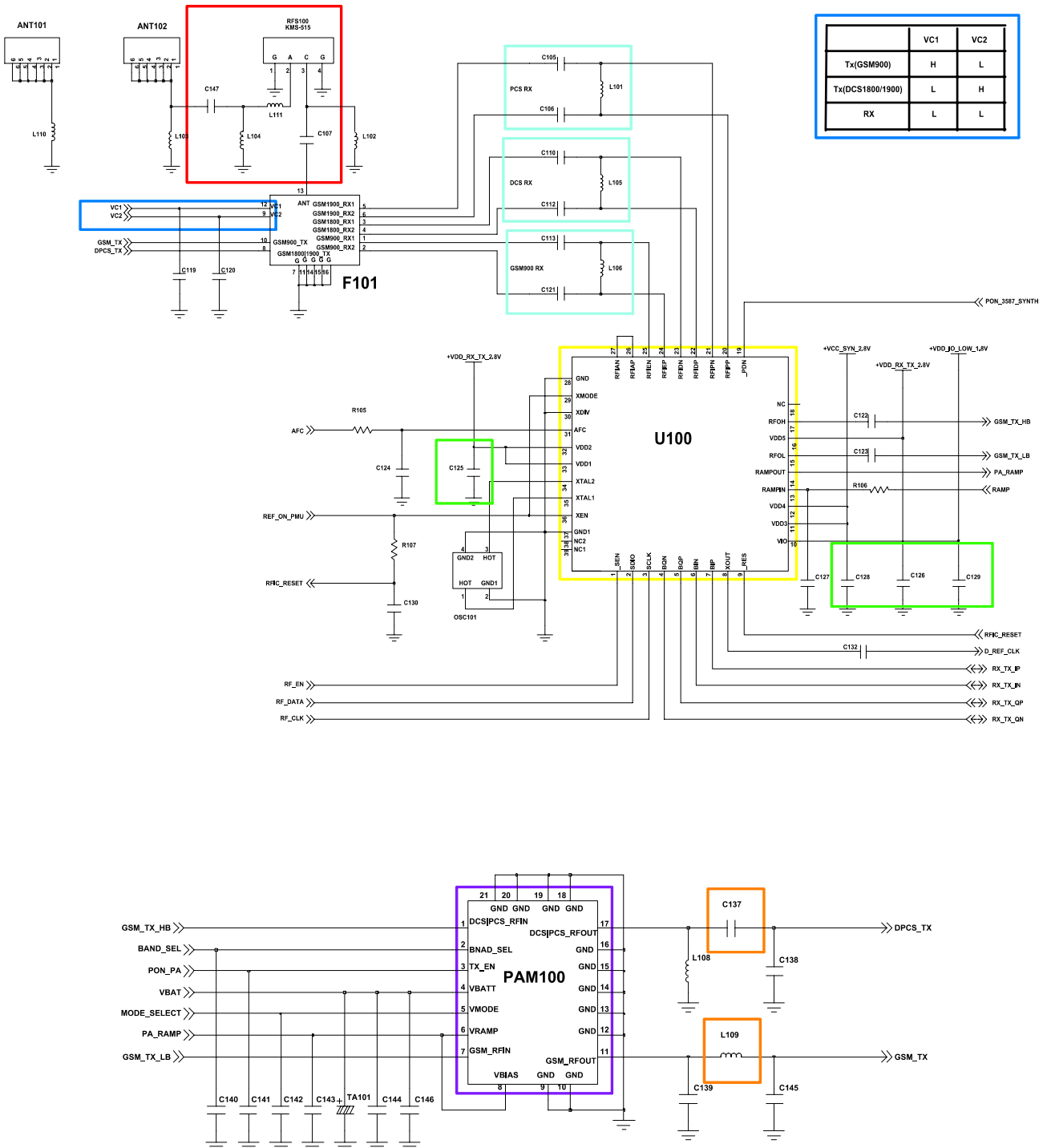
9-16. PCS Receiver
- Master only

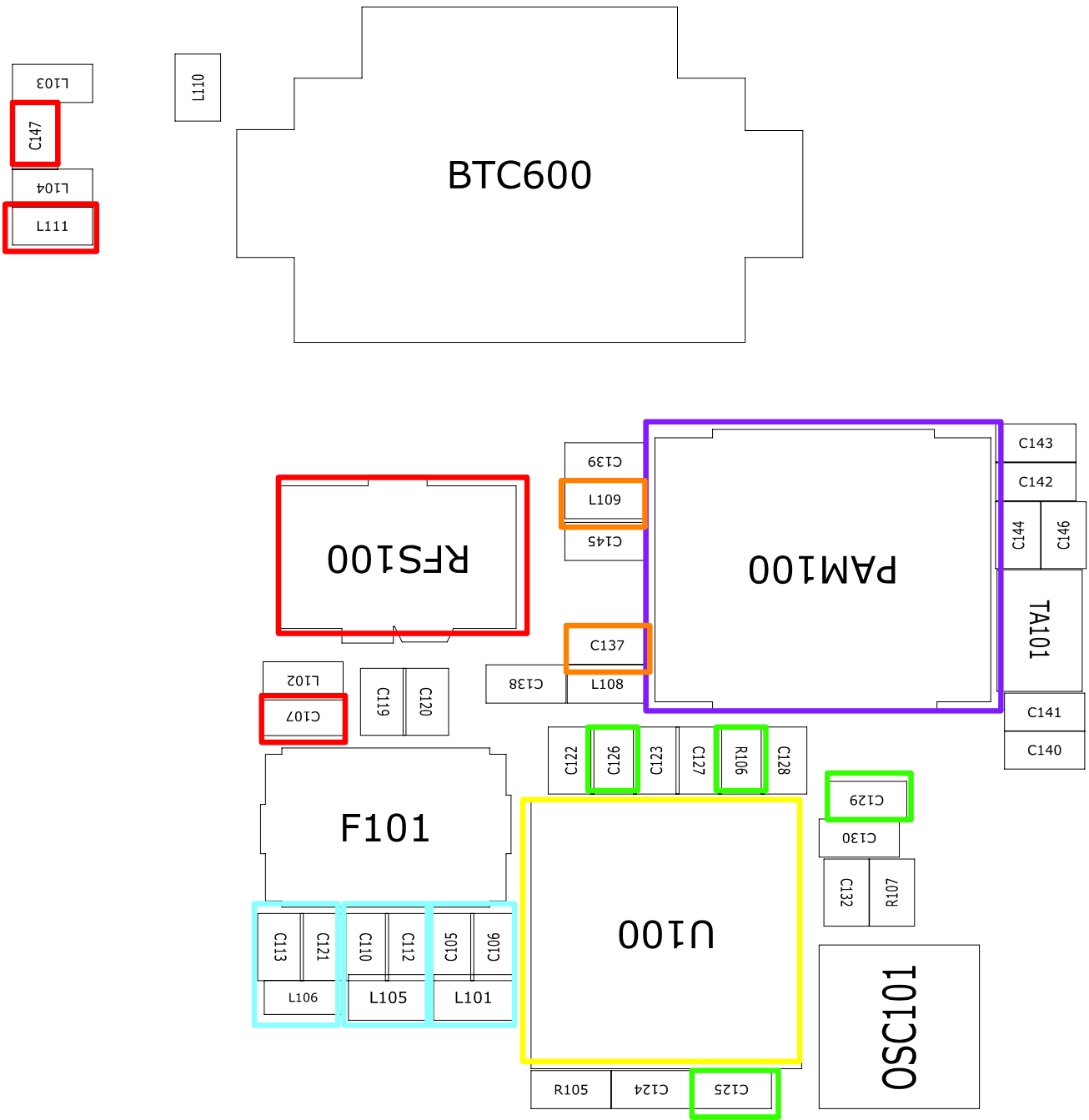


9-17. PCS Transmitter
- Master only

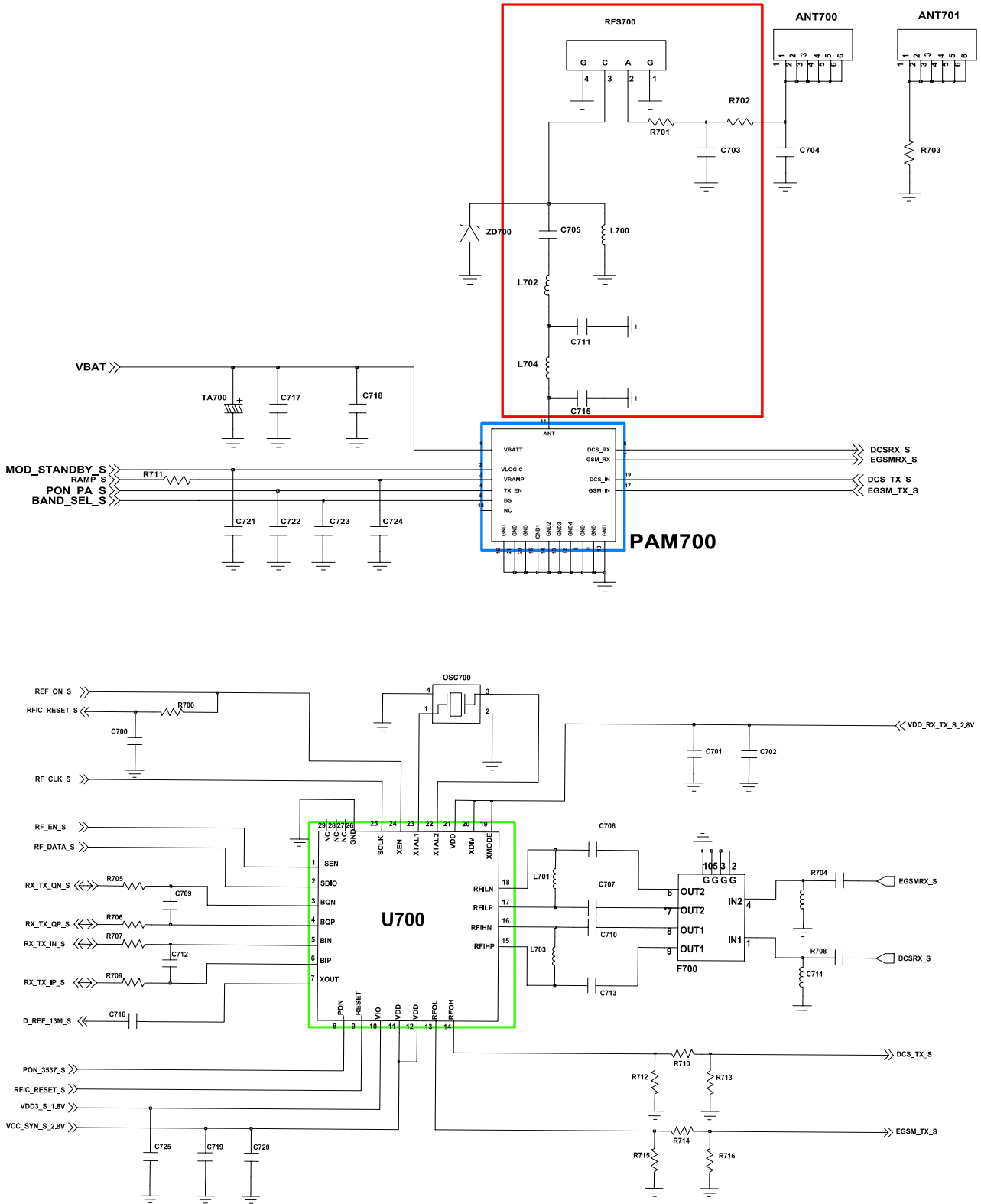


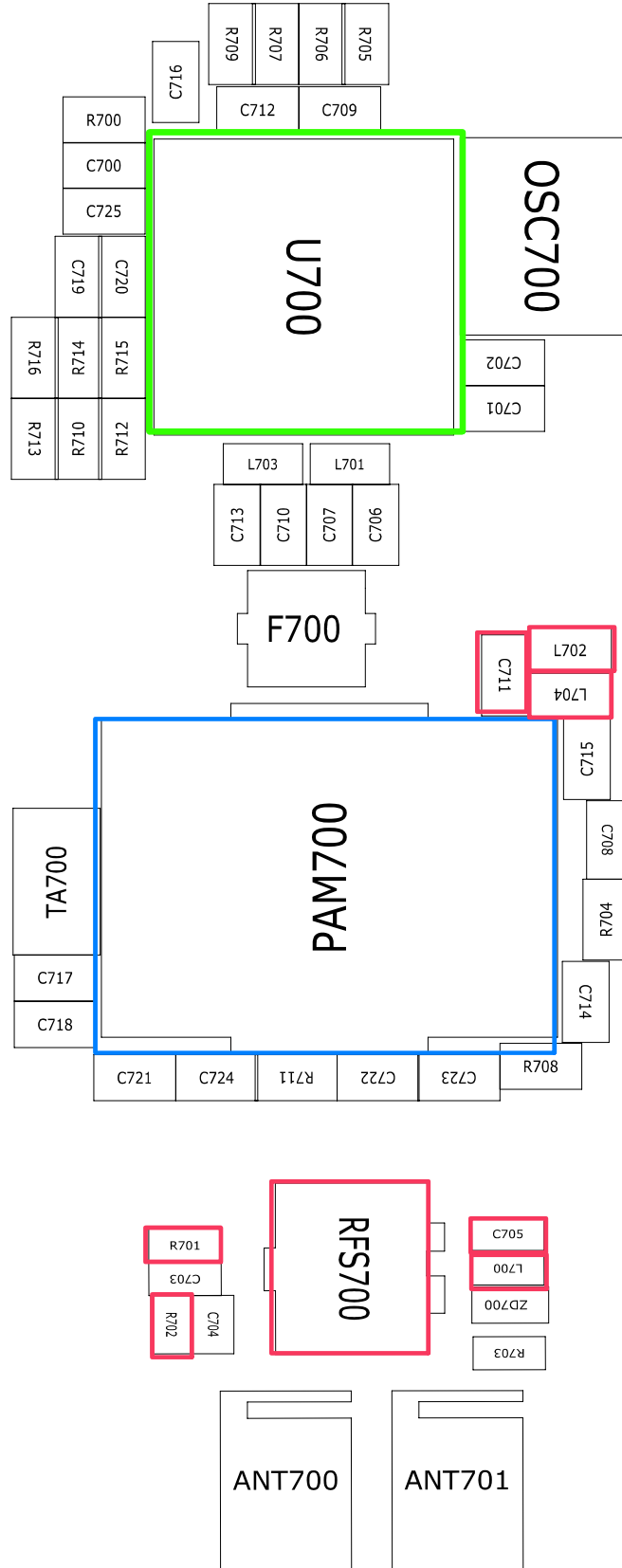
[Master] Rx, Tx



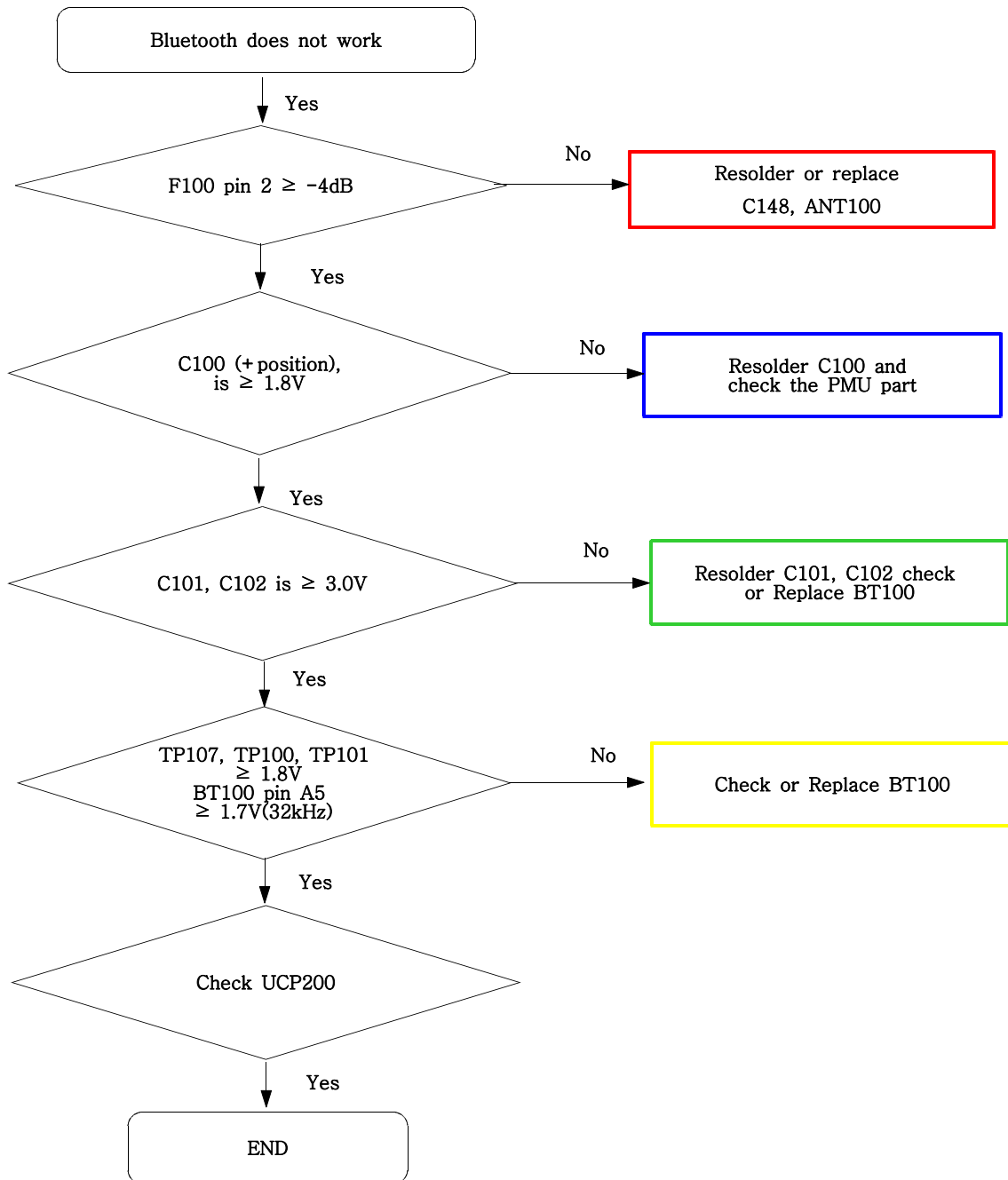


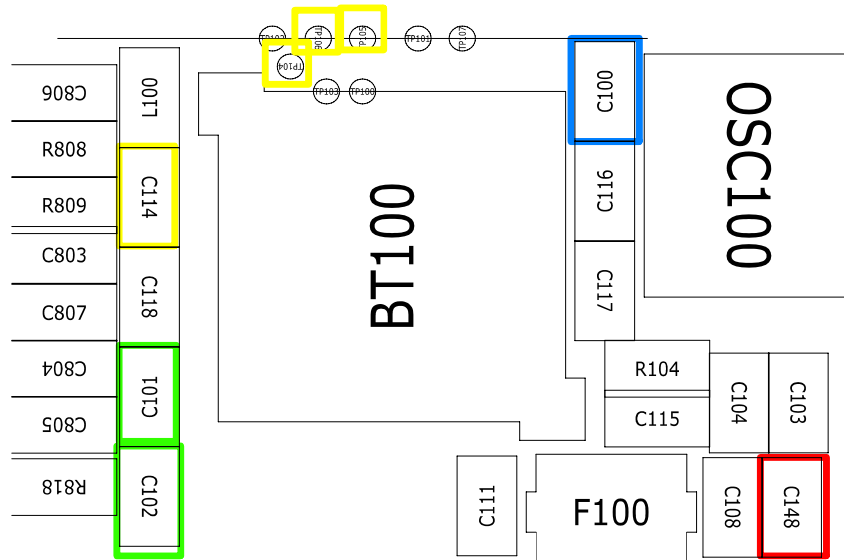
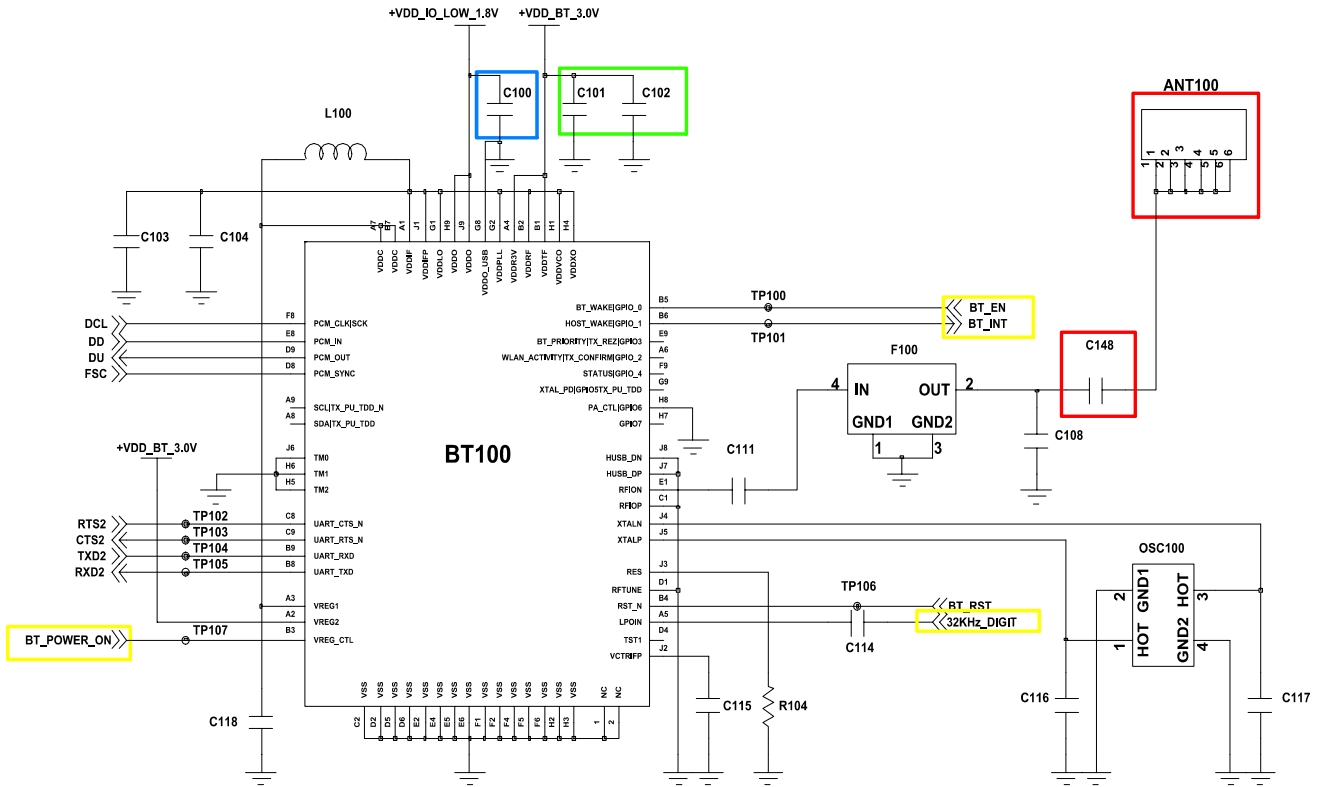
[Slave] Rx, Tx





9-18. Bluetooth part





9-19. FM Radio part

